

Industry

Specification Guide to Floors, Walls & Accessories

gerflor.co.uk
gerflor.ie
gradus.com



Gerflor[®]

GRADUS



**A NEW LEVEL
OF INNOVATION,
QUALITY, SERVICE
& TEAMWORK**



**EXCELLENT SERVICE
PRODUCT EXPERTISE
WARRANTY
SUSTAINABILITY**



**FLOOR COVERING
CLEAN CORNERS
WALL PROTECTION
BARRIER MATTING
STAIR EDGINGS**

Contents

Gerflor | Gradus

87 Years of Industrial Innovation	4
The Industry Specialists	6
Gerflor Gradus - Services	8

Life Sciences

The Specifics & Our Solutions	10
Life Sciences Solutions Map	12

High Technology

The Specifics & Our Solutions	14
High Technology Solutions Map	16

Manufacturing

The Specifics & Our Solutions	18
Manufacturing Solutions Map	20

Flooring Solutions

Mipolam BioControl EL5	22
Mipolam BioControl Performance	24
Mipolam BioControl Clean	26
Watertightness Control	28
Mipolam EL7	30
Mipolam EL5	32
GTI EL5 Cleantech	34
GTI EL5 Connect	36
GTI Max	38
GTI Accessories	40
Industrial Tile	42
Tarasafe Safety Floor	44
Taralay Premium	46
Taralay Impression Compact	48
Clean Corner System	50
Creation 55 Dryback	52
Lunar & Stratus	54

Wall Protection Solutions

Mural Ultra Design	56
SureProtect Endure	58
SureProtect Pure	60
SureProtect Design	62
Wall Protection Systems	64
Safety & Protection Systems	66

Additional Solutions

Barrier Matting Systems	68
Stair Edgings & Flooring Accessories	70
Innovation, Service & Design	72
Sustainable Future	74

View our full colour range

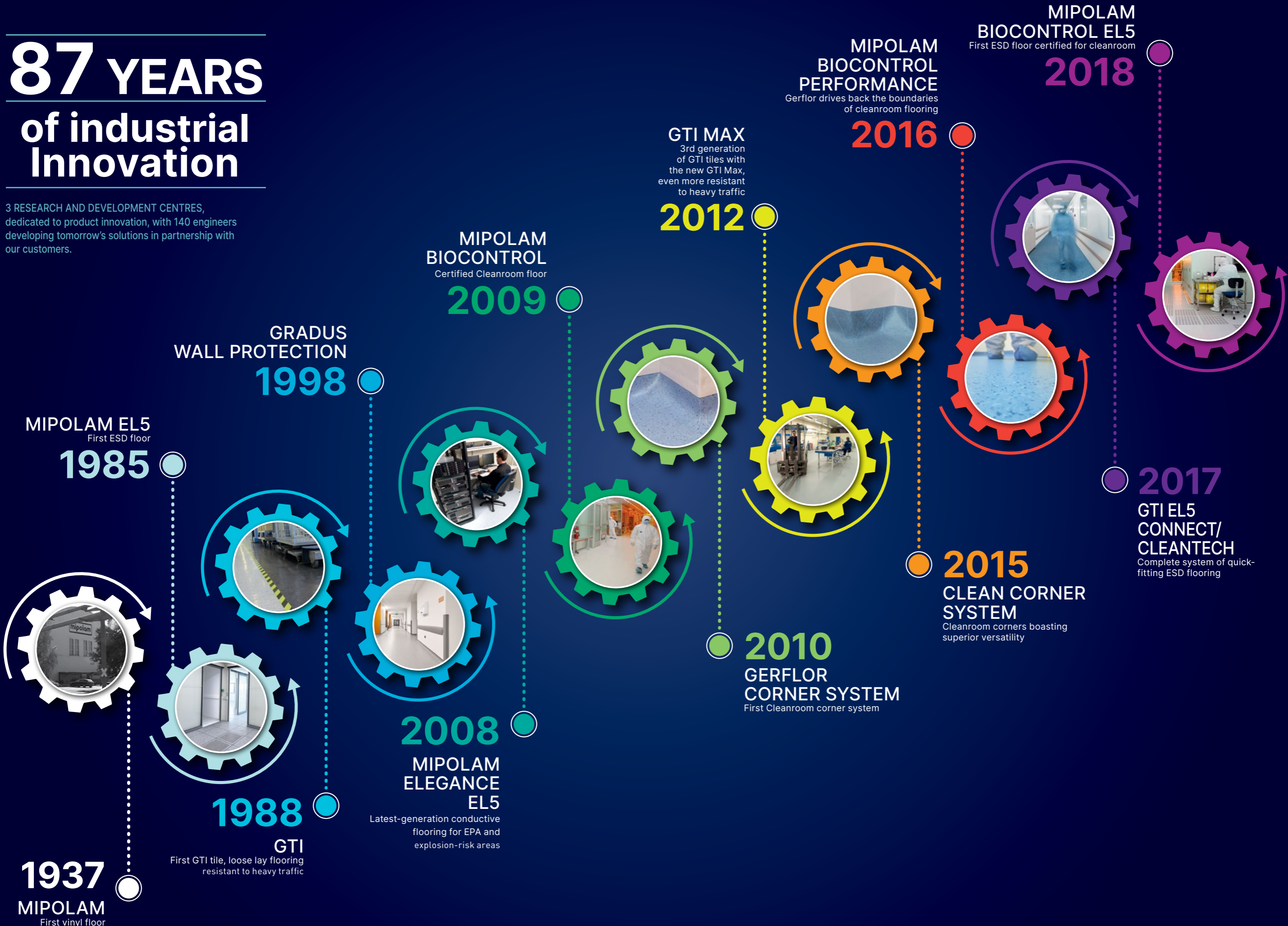
The colour options shown within this brochure are just a small selection, full colour ranges are available on our websites: gerflor.co.uk and gradus.com

Disclaimers

Due to printing limitations there may be variations between the colours of the actual flooring and images shown in this document. The technical information contained in this brochure is subject to change at any time due to products being subject to continuous improvement processes. Please check latest technical information on our websites www.gerflor.co.uk & www.gradus.com or with a sales advisor prior to ordering.

87 YEARS of industrial Innovation

3 RESEARCH AND DEVELOPMENT CENTRES,
dedicated to product innovation, with 140 engineers
developing tomorrow's solutions in partnership with
our customers.



1937
MIPOLAM
First vinyl floor

1988
GTI
First GTI tile, loose lay flooring
resistant to heavy traffic

MIPOLAM EL5
First ESD floor
1985

GRADUS
WALL PROTECTION
1998

2008
MIPOLAM
ELEGANCE
EL5
Latest-generation conductive
flooring for EPA and
explosion-risk areas

MIPOLAM
BIOCONTROL
Certified Cleanroom floor
2009

GTI MAX
3rd generation
of GTI tiles with
the new GTI Max,
even more resistant
to heavy traffic
2012

2010
GERFLOR
CORNER SYSTEM
First Cleanroom corner system

MIPOLAM
BIOCONTROL
PERFORMANCE
Gerflor drives back the boundaries
of cleanroom flooring
2016

2015
CLEAN CORNER
SYSTEM
Cleanroom corners boasting
superior versatility

2017
GTI EL5
CONNECT/
CLEANTECH
Complete system of quick-
fitting ESD flooring

MIPOLAM
BIOCONTROL EL5
First ESD floor certified for cleanroom
2018

Gerflor & Gradus – The Industry Specialists

With over 100 years combined experience, Gerflor & Gradus have forged an unrivalled reputation for quality, design and service. Gerflor & Gradus are at the forefront of Industry, in the manufacture & supply of complete floor & walls solutions that contribute to a clean & safe facility. Our products maximise the quality of manufactured products & increase personal safety in the Life Science, ESD, High Technology, Clean Rooms & Manufacturing Sectors.

Gerflor is dedicated to environmental sustainability, with all production sites ISO14001 certified and a strong focus on using recycled materials and reducing adhesive use to facilitate recycling at the end of the product's life. Innovation is central to Gerflor's operations, continuously developing new products to meet the evolving needs of its customers. With a presence in over 100 countries, Gerflor is committed to delivering high-quality, eco-friendly flooring solutions

that enhance the spaces where people work and maintain critical environments.

Gradus, is a flooring accessories business of contract interior solutions. Specialising in stair edgings, floor trims, carpet, barrier matting, wall protection and LED lighting. Gradus is committed to environmental sustainability, ensuring that its products meet the highest standards of quality and durability. With a strong focus on innovation and customer satisfaction, Gradus continually develops new solutions to meet the specific needs of its clients. The company's experienced team is dedicated to providing exceptional service and support, ensuring that every project is completed to the highest standards. Gradus's core values of integrity, quality, and customer focus drive its mission to create safe, functional, and aesthetically pleasing interior spaces.



Key considerations required to deliver a successful industrial project...



Ultra Clean

Gerflor products are designed to be smooth, rot-proof, non-absorbent, watertight, and non-porous. They feature heat-welded smooth seams to prevent any level differences between surfaces, such as floor-to-floor or floor-to-wall transitions. Additionally, weld and surface-integrity controls are implemented to ensure the quality of the installation.



Watertightness

Exclusive installation solutions ensure a perfect seal across the entire surface of the fitted zone. These solutions include covings, hot-welding, easy-fit corners, and control of welding and surface integrity.



Durability & Cleanability

Busy environments with frequent movement of foot and wheeled traffic require robust and easy to clean & maintain flooring and flooring accessories. To address this, Gerflor & Gradus products are made from high-quality, durable materials. Gerflor's patented surface treatments facilitate quick and easy cleaning.



Safety

According to the Health & Safety Executive (HSE), slips and trips account for over a third of all major injuries in the workplace. Gerflor flooring has been developed to offer excellent slip resistance. Whereas Gradus stairnosings have been specifically developed to provide superior safety on all size and style of staircases.



Reducing life cycle costs

Industrial facilities are highly active environments with frequent movement of both equipment and people, necessitating the use of durable and easy-to-maintain materials. To address this need, Gerflor offers flooring products made from top-quality materials. Additionally, Gradus wall protection can play a significant role in reducing a buildings life cycle costs by decreasing maintenance and repair expenses.



Sustainability

Gerflor & Gradus offer a range of environmentally friendly flooring, wall covering and flooring accessory solutions that incorporate recycled materials. These products are also long lasting, low maintenance and recyclable at the end of their life. These products and sustainable initiatives play a crucial role in supporting the transition towards a net-zero UK.

Gerflor and Gradus Services

Technical and Specification Support Specialists

Our dedicated industry specialists can assist you with all your specification needs. Whether it's a refurbishment project or new build, we have the expertise and innovations to create your ideal interior scheme. We work together to propose the optimum solution for the clients' needs, utilising the most appropriate safe, durable and sustainable solutions for the specific applications. We don't stop at just providing specification advice, we can also provide a free site survey where we will visit, assess and audit the facility and make suggestions on improvements to future proof the building interiors.



The Technical Support team is available to offer advice on the specification and installation of products, including guidance surrounding the latest building standards and legislation. Be rest assured that Gerflor & Gradus have a world-class pedigree of products that are tried and trusted to deliver every time. All backed up by a network of technical, specification and customer support teams.

Sampling Support Services

We offer a free sample service for all our clients from product overview binders, loose samples to supporting literature. For something bespoke like mood boards or test material, contact us and we will aim to supply the sample for your required need. To request a sample, literature, or anything else call 01625 428922 or email contractuk@gerflor.com or imail@gradus.com.

Local stock

We stock our best-selling product ranges locally in the UK. Our warehousing and distribution facilities in Winsford and Macclesfield offer a broad range of in-depth stock to provide an enhanced service level. Essential when time is of the essence and our customers need innovative products and fast delivery for essential quick turnaround projects. Speak to our industry specialists for stock availability or further information.



Specification Documents and BIM Objects

NBS provides access to a single source of product information and BIM objects for Gerflor & Gradus products. NBS Source provides an additional level of enhanced product data in a consistent, structured format that will integrate seamlessly into your project workflow.

Industry Lunch & Learn Sessions

Our industry specification experts are available to help with developing knowledge surrounding ESD & Laboratory Flooring, Cleanroom & Industry Flooring, Wall & Corner Protection, Matting & Finishing Solutions.

For something less formal than a traditional CPD, a Lunch & Learn session with our industry specialists can be arranged at a time and date to suit you and people can drop in as they wish to discuss our products generally or address specific project requirements.

To book a Lunch & Learn session, contact our Technical Support team on 01625 428922, email contractuk@gerflor.com or imail@gradus.com



CPD's and Training

As members of RIBA CPD Providers Network, we offer a full range of RIBA assessed and approved CPD seminars covering: Vinyl Flooring, Sports Flooring, Matting, Wall Protection, Stair Edgings and industry specific CPD's such as Healthcare and Industry.

To book a CPD Seminar, contact our Technical Support team on 01625 428922, email: contractuk@gerflor.com or imail@gradus.com



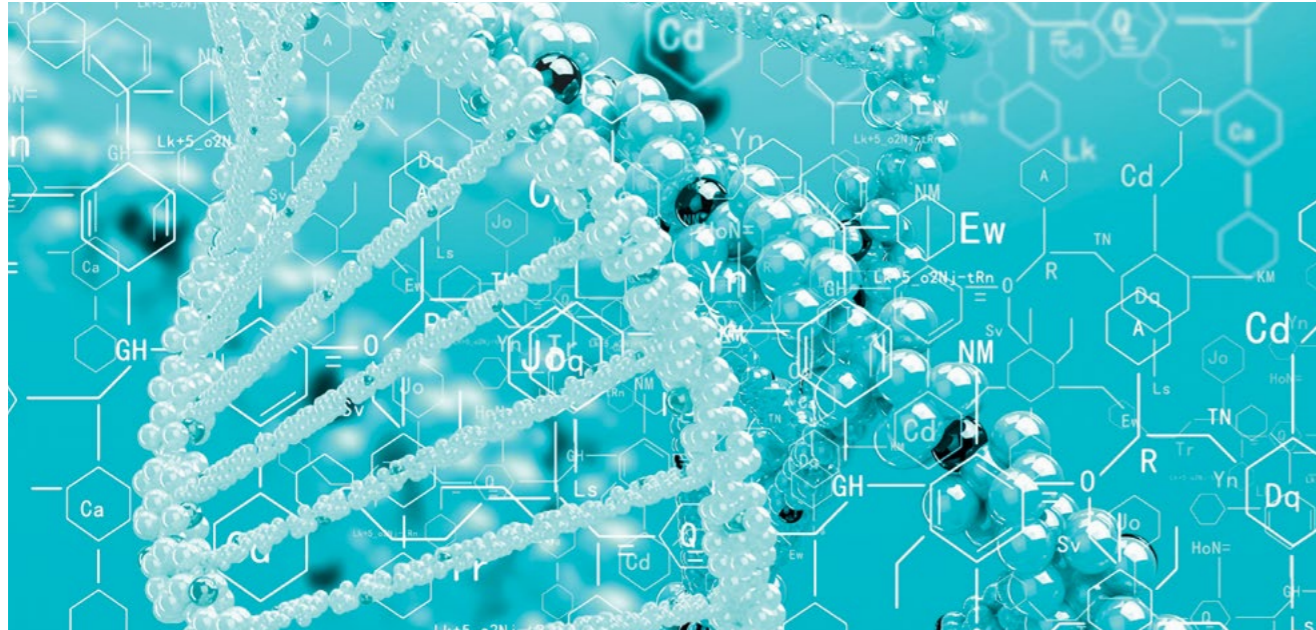
Accreditations and Certifications

Gerflor



Gradus





Standards

To guarantee production quality, manufacturers in the life sciences industry (pharmaceuticals, cosmetics, etc.) need to comply with various standards and regulations, and to Good Manufacturing Practices (GMP):

- ISO 14644-1 Classification of air cleanliness
- ISO 14644-8 Control of molecular contamination
- ISO 14698-1 Control of biocontamination

To comply with them, manufacturers must use special facilities to control the production environment: cleanroom.

The constraints can vary depending on the activity and are classified as follows:

- CLASS A, B, C or D for industries subject to GMP
- ISO 4, 5, 6, 7, 8, 9 for the rest (formerly class 10, 100, 1000...)

Containment Areas

Zones that are subject to GMP, cleanrooms and similar areas are normally required to protect the products made there. But there are also containment facilities whose purpose is to protect the outside world and researchers from the products handled in those zones.

They are classified by type and according to the level of biological safety (BSL): L1, L2, L3, L4 (high-security laboratory)

	GMP Class	A	B	C	D
Particle concentrations at rest	Maximum number of particles (d < 0.5 µm) per m ³	3 500	3 500	350 000	3 500 000
	Maximum number of particles (d ≥ 5 µm) per m ³	0	0	2 000	20 000
Particle concentrations when active	Maximum number of particles (d < 0.5 µm) per m ³	3 500	350 000	3 500 000	Depends on type of activity
	Maximum number of particles (d ≥ 5 µm) per m ³	0	20 000	20 000	
Microbiological contamination (recommended limits when active)	Air: cfu/m	< 1	10	100	200
	Petri dish 90mm diam: cfu/4 hrs	< 1	5	50	100
	Agar 55mm diam: cfu/plate	< 1	5	25	50
	Glove print (5 fingers): cfu/glove	< 1	5	-	-

The formulations of Gerflor products limit the emission of controlled particles and molecules when subject to temperature differentials. Compacting reduces the micro-roughness of surfaces to limit the adhesion of particles and micro-organisms.



- Gerflor products are smooth, rot-proof, non-absorbent, watertight and non-porous.
- Heat-welded smooth seams to avoid any level difference (floor-floor, floor-wall...) Weld and surface-integrity controls ensure the quality of the installation.
- Does not allow development of biocontamination such as bacteria and fungus.



- Exclusive installation solutions ensure a perfect seal across the entire surface of the fitted zone:
- Covings
 - Hot-welding
 - Easy-fit corners
 - Control of welding and surface integrity



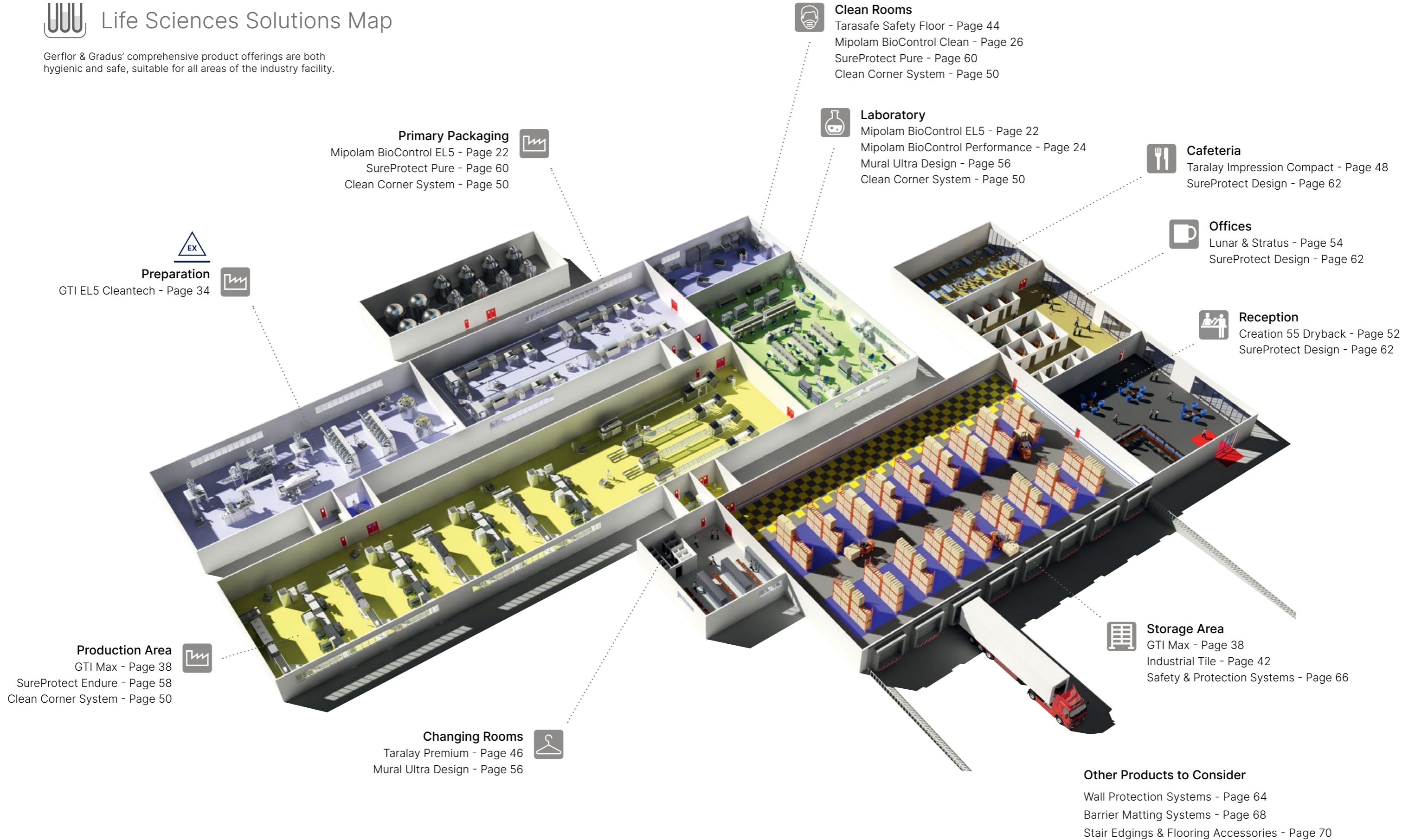
- Factory-applied surface treatments:
- Does away with the need to apply acrylic emulsion for the lifetime of the product.
 - Offer high resistance to decontamination products (hydrogen peroxide, peracetic acid, etc).
 - And, combined with Gerflor installation, enable a great ease of maintenance.



- Gerflor solutions are particularly wear-resistant and withstand impacts from carts and other wheeled traffic in pharmaceutical production units.
- The quality of the factory-made products - using a tightly controlled production process - does not depend on operating conditions nor on the installer's competence.

Life Sciences Solutions Map

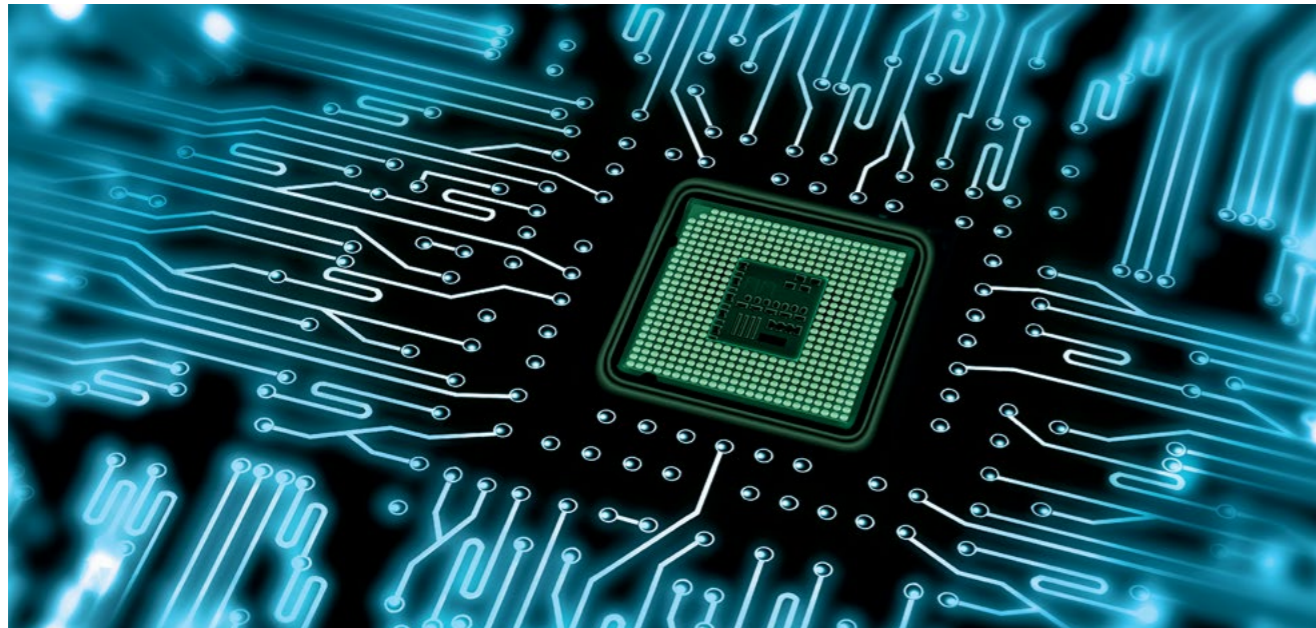
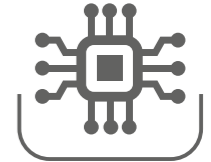
Gerflor & Gradus' comprehensive product offerings are both hygienic and safe, suitable for all areas of the industry facility.



A selection of our clients:

Cosmetics - Biotechnology - Pharmaceuticals - Medical Devices - Veterinary Supplies - Food Production - Safety Labs





Static Electricity

Static Electricity is generated by friction between two materials where one is non-conductor. This produces a build-up of electric charge on the surface of each material with one becoming positively and the other becoming negatively charged. The electrostatic charges naturally seek to balance themselves out. Electrostatic Discharge (ESD) occurs as soon as contact is made with a conductive element. Static electricity is harmless to humans. However, it can pose serious threats to sensitive equipment. Vulnerable electronic equipment can be subject to a reduction of sensitivity and even complete failure in the event of an uncontrolled discharge of static energy. Typical concerned areas include healthcare environments such as operating theatres, electronics industry and industrial clean rooms.

ESD Risks

In controlled environments and industrial premises, electrostatic discharges lead to numerous issues. The most frequent among them are:

- Degradation of sensitive electronic components leading to a loss of performance which is occasionally impossible to detect during routine quality control
- Deterioration of production conditions: disruption of sensitive electronic equipment, aggregation of dust, reduction in line output, etc
- Risk to human safety

In the electronic industry, 30-50% of faults found in components are due to uncontrolled Electrostatic Discharge (ESD). In particular circumstances, close packing of components can have a marked increase in the sensitivity of products and charges as little as 10 volts may be sufficient to increase risk. This is most notable in restricted industrial areas where ESD can cause explosions. This may be due to the presence of flammable or explosive mixtures but also in areas where fine powders are subject to friction such as the bakery industry where fire is a permanent threat.

Controlling ESD

To reduce the risk from static electricity, various solutions can be effective including earthing points for people and equipment, static control packaging or ionisation, all having the intention of:

- Limiting body voltage generation
- Controlling discharges

An overall ESD risk assessment must be carried out to take into account the professional environment, the risks linked to procedures and the sensitivity and susceptibility of the components. The most employed method for limiting electrostatic charge is by grounding people and objects. The use of electro-conductive floorings combined with conductive footwear constitutes a key part in managing this phenomenon. It guarantees a long-term, low level and harmless discharge to people.



Gerflor controls all the parameters and standards that, when combined with quality ESD shoes, enable the floor to:



Limit the accumulation of static electricity

- IEC/EN 61340-4-5
- ANSI/ESD STM 97.2



Efficiently eliminate electrostatic charges

- IEC/EN 61340-4-5 and IEC/EN 61340-4-1
- ANSI/ESD STM 97.1 and ANSI/ESD S 7.1

Gerflor offers a comprehensive range of ESD floorings that let you:



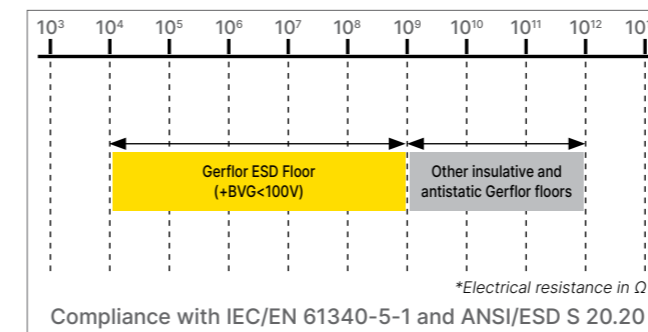
Protect electronic equipment and components from the risk of electrostatic discharges (EPA*)



Protect people from the risk of electrostatic discharges

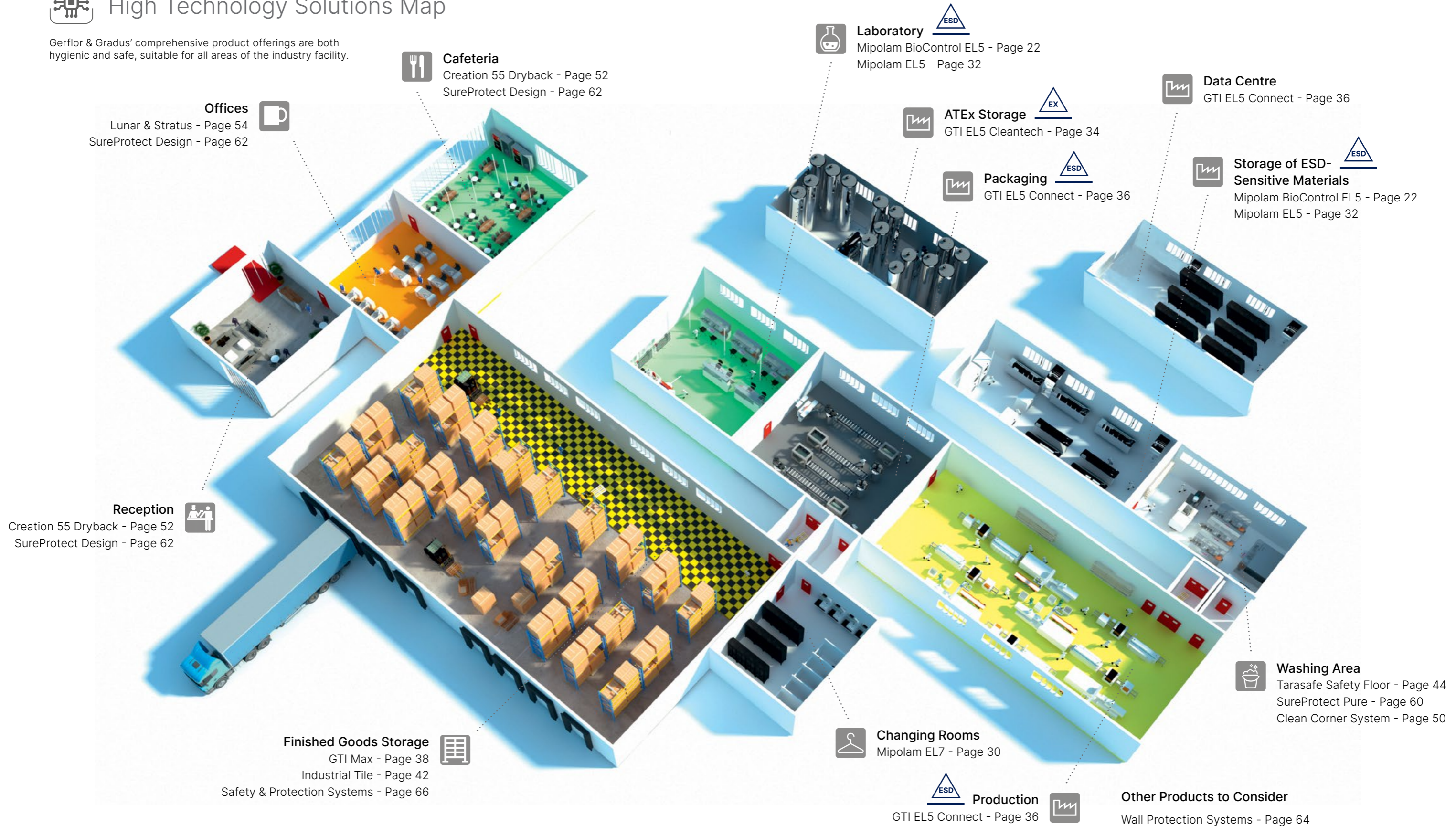


Protect premises from the risk of explosion (ATEX area)



High Technology Solutions Map

Gerflor & Gradus' comprehensive product offerings are both hygienic and safe, suitable for all areas of the industry facility.



Offices
Lunar & Stratus - Page 54
SureProtect Design - Page 62

Cafeteria
Creation 55 Dryback - Page 52
SureProtect Design - Page 62

Laboratory
Mipolam BioControl EL5 - Page 22
Mipolam EL5 - Page 32

ATEX Storage
GTI EL5 Cleantech - Page 34

Data Centre
GTI EL5 Connect - Page 36

Packaging
GTI EL5 Connect - Page 36

Storage of ESD-Sensitive Materials
Mipolam BioControl EL5 - Page 22
Mipolam EL5 - Page 32

Reception
Creation 55 Dryback - Page 52
SureProtect Design - Page 62

Finished Goods Storage
GTI Max - Page 38
Industrial Tile - Page 42
Safety & Protection Systems - Page 66

Changing Rooms
Mipolam EL7 - Page 30

Production
GTI EL5 Connect - Page 36

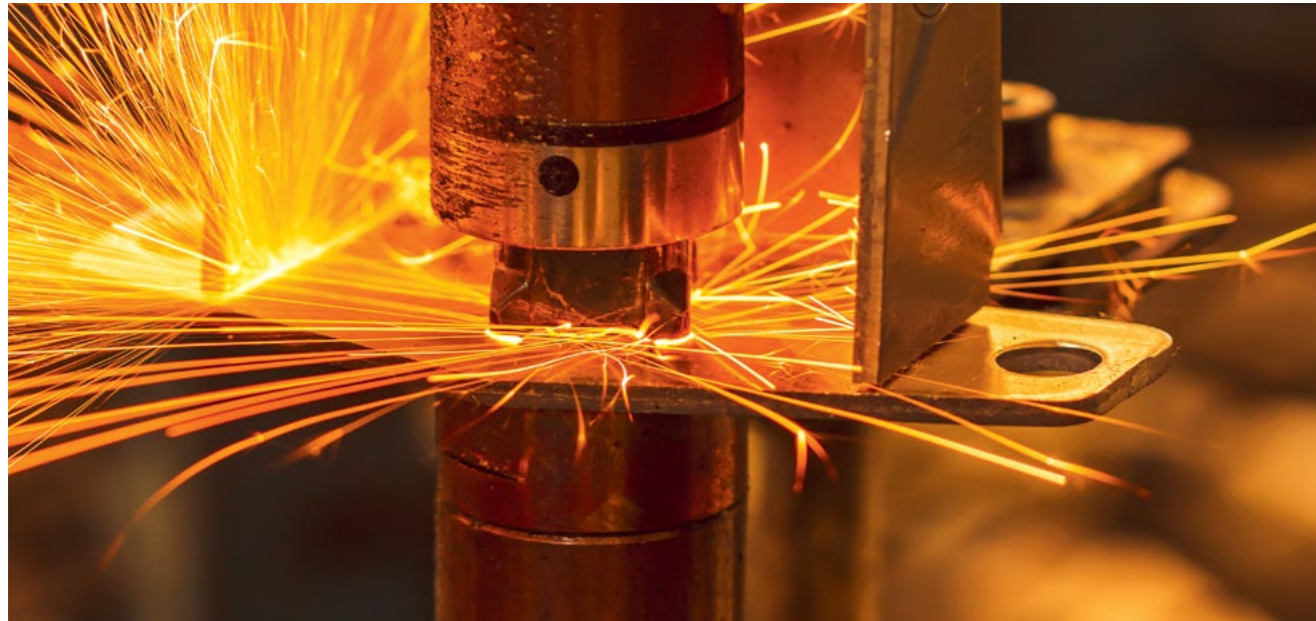
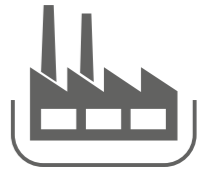
Washing Area
Tarasafe Safety Floor - Page 44
SureProtect Pure - Page 60
Clean Corner System - Page 50

Other Products to Consider
Wall Protection Systems - Page 64
Barrier Matting Systems - Page 68
Stair Edgings & Flooring Accessories - Page 70

A selection of our clients:

Electronics - Optics - Nuclear - Aerospace - Defence - Photovoltaic - Aeronautics - Gigafactories





In order to evolve in today's competitive markets, manufacturers must demonstrate their capacity to improve the productivity and quality of their products and services

Compliance with Standards

To have their products and services accepted in domestic and international markets, industries must comply with a certain number of standards, such as ISO 9001 for quality management.

Quality

Manufacturers apply quality management procedures intended to improve their productivity, the performance of their products, and customer satisfaction: 5S for example.



Safety

Safety is regulated (OHSAS 18001). It is aimed at improving productivity and protecting persons and property. This anticipation is integrated into the design and installation of the premises and means of production.

Comfort

This idea of workplace comfort is subjective and must form part of a deliberate initiative to improve productivity.

It covers the following topics:

- Ergonomics
- The design of workstations
- Human fatigue
- Auditory comfort
- Visual comfort

All these ideas require the right design and the right equipment on the premises and at the workstations.

Facilitating Productivity

Loose-laid floors offer fast and easy installation in live environments with little or no requirement for shut down

Ensuring Quality

Gerflor floorings and wall panels are rot-proof, non-absorbent, watertight, non-porous, and reduce bacterial growth.

Our products benefit from factory-applied surface treatments to prevent dirt retention and incrustation.

Thanks to their flexibility and their resistance to scratching and abrasion, Gerflor solutions can be used without the material cracking or breaking (in normal use conditions). Factory-made material, the quality of our floorings is known and controlled.

Ensuring Safety

• Design of work zones
- Numerous possibilities for marking and zoning by colour coding and logos

• Protection of employees
- Non-slip products against risk of falling
- ESD products against electrical risks

• Protection of premises and equipment
- Solutions for ATEX area

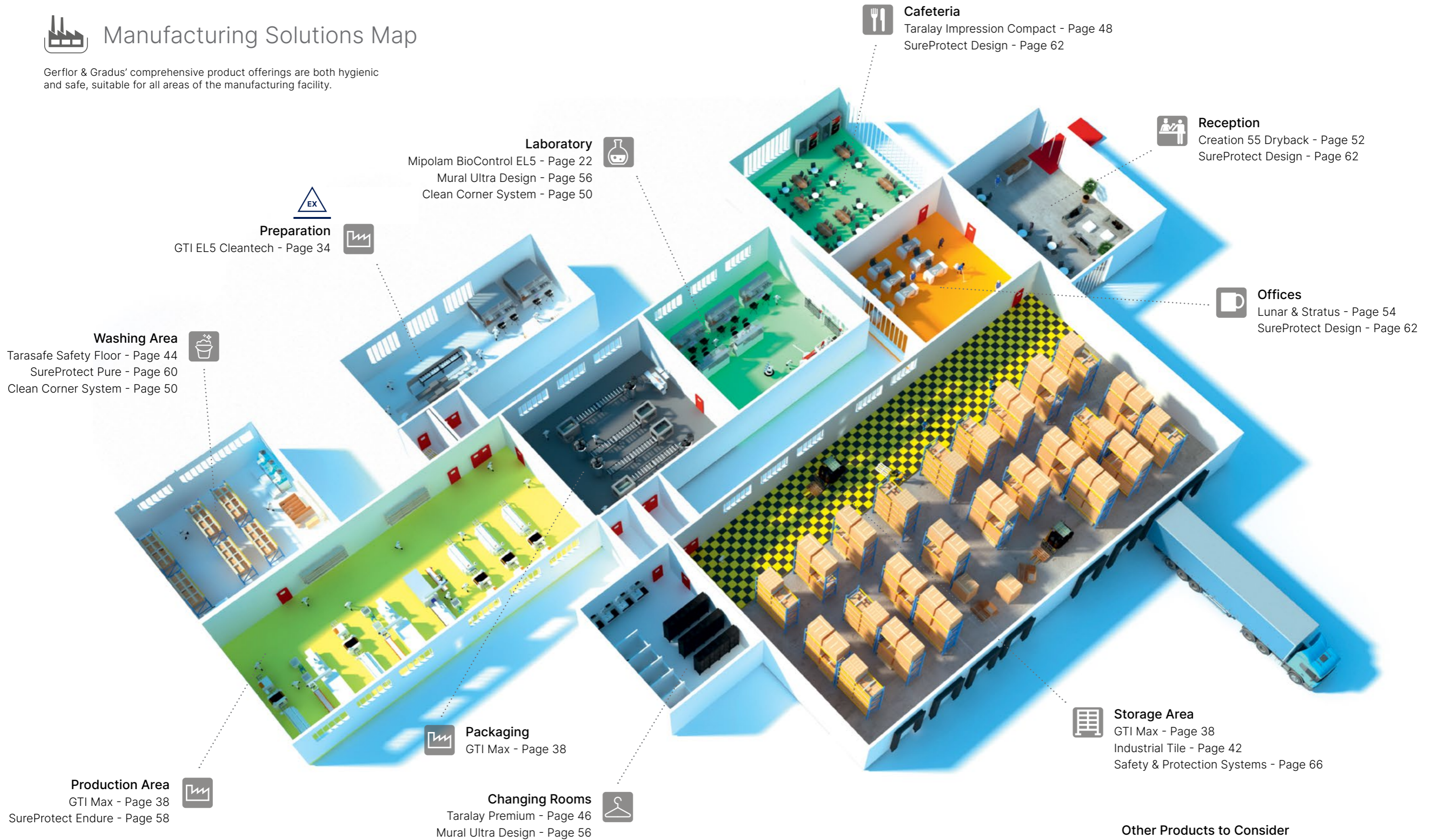
Improving Comfort at Work

• Improvement of working conditions
- Reduces noise nuisance
- Comfortable to walk on and stand on
- Anti-fatigue, no heavy legs syndrome
- No unpleasant odour
- Thermal insulation
- Range of colours to improve visual comfort at work



Manufacturing Solutions Map

Gerflor & Gradus' comprehensive product offerings are both hygienic and safe, suitable for all areas of the manufacturing facility.



A selection of our clients:

Automotive - Mechanical - Papermaking - Textiles - Plastics Processing - Printing



Mipolam BioControl EL5

Conductive Vinyl for EPA, ATEX & Cleanroom Areas

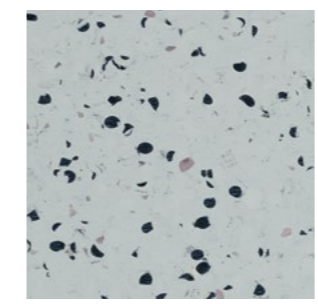
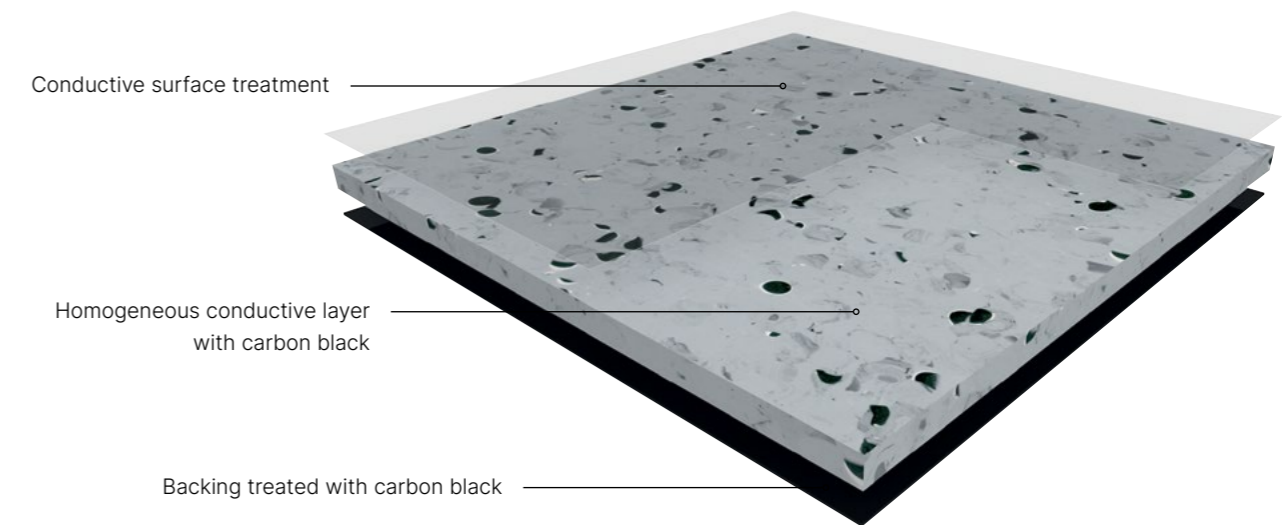
Mipolam BioControl EL5 ISO standards, like GMP, require Life Sciences manufacturers to manage contamination levels, continuously over time, and be audited regularly by competent bodies for compliance.

Mipolam BioControl EL5 has been created with antistatic properties, ideal for sensitive environments to prevent electrostatic discharge.

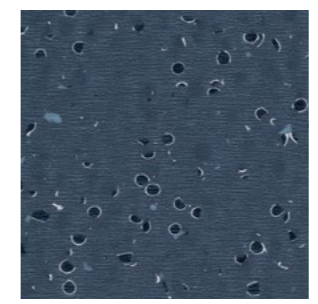


Product benefits:

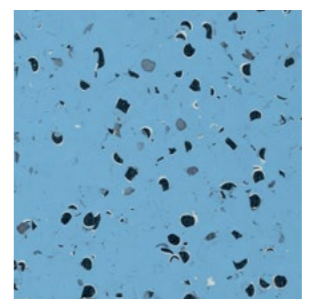
- > Suitable for heavy traffic areas
- > Complies with production standards for ESD sensitive areas
- > Resistance to decontamination and wear in cleanroom environments
- > Revolutionary Evercare™ surface treatment providing unrivalled chemical and scratch resistance
- > No polish is required for the entire lifetime of the product – reducing maintenance costs



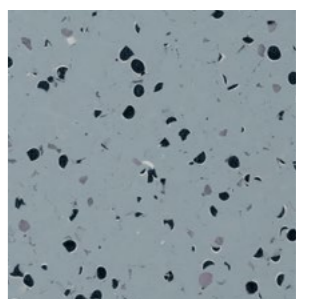
2001 Light Fog
Y: 55.2



2002 Volcano
Y: 7



2004 Horizon
Y: 33.4



2006 Medium Fog
Y: 40.6

For full product details [click here](#)

Mipolam BioControl Performance

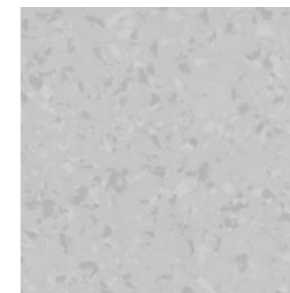
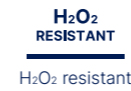
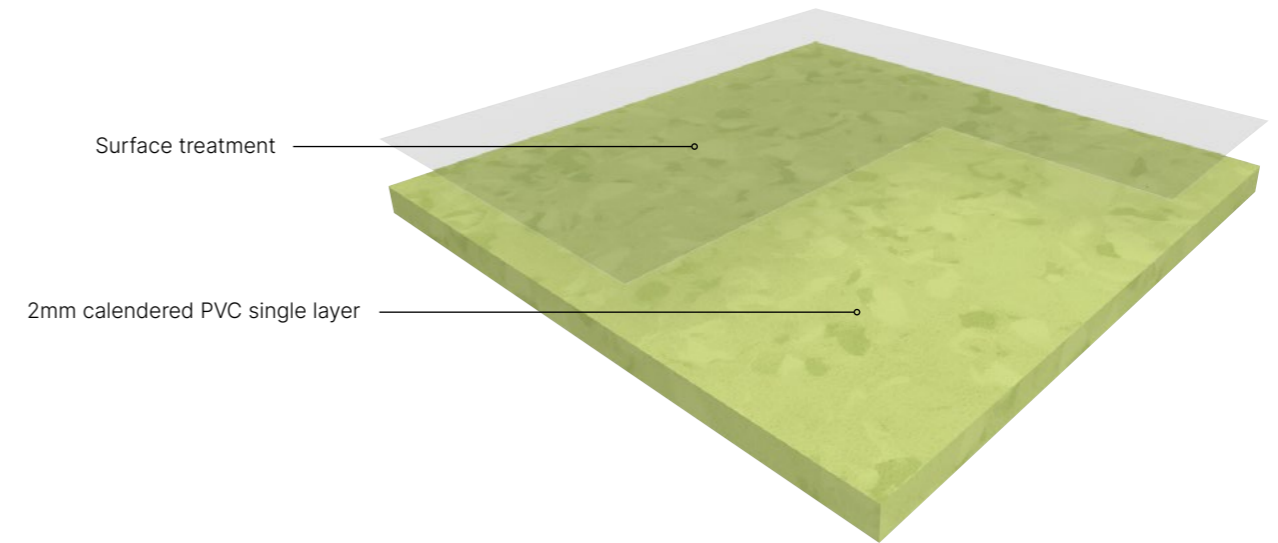
High Performing Homogeneous Vinyl Flooring

Mipolam BioControl Performance is a high performing homogeneous vinyl floor covering in sheet form designed for cleanroom applications. It is highly resistant to microbiological damage and has good resistance to chemicals and staining. Mipolam Biocontrol Performance is coated with a photo-reticulated polyurethane surface treatment that provides surface finish and cleanability suitable for cleanroom contamination control. It particularly withstands Hydrogen Peroxide (H₂O₂) type decontamination processes.

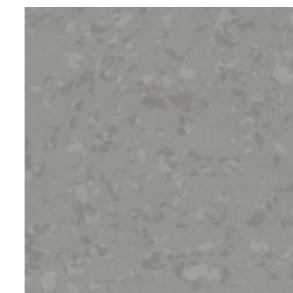


Product benefits:

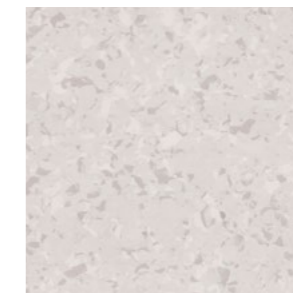
- > Cleanroom certified: for use in ISO 3 cleanrooms according to ISO 14644-1
- > Excellent resistance to staining and chemicals
- > Suitable for high footfall, heavy static, dynamic loads and GMP class A compliant
- > 17% plant-based content
- > Resistance to gaseous H₂O₂: No alteration, to BIOQUELL process / ISO 14644-4



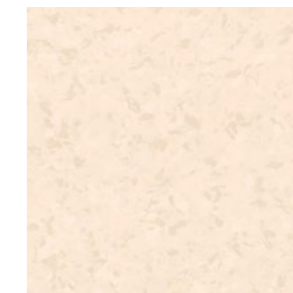
6009 Grey Stone
Y: 52.4



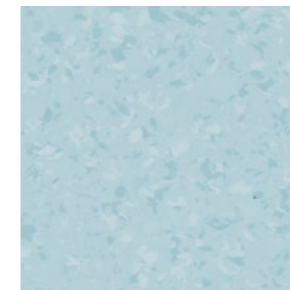
6029 Cloud
Y: 35.7



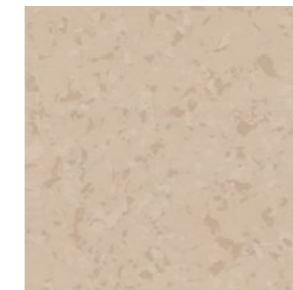
6008 Calico
Y: 66.8



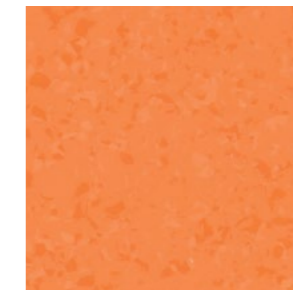
6001 Cotton
Y: 73.4



6006 Blue Sky
Y: 52.7



6031 Breeze
Y: 48.5



6025 Tangelo
Y: 35.8



6027 Accacia
Y: 48.2

Options shown are a small selection, for full colour range [click here](#)

Mipolam BioControl Clean

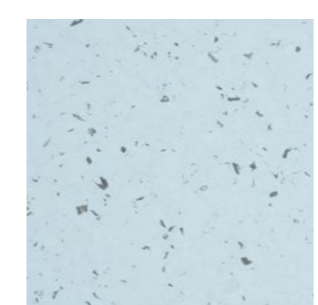
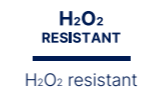
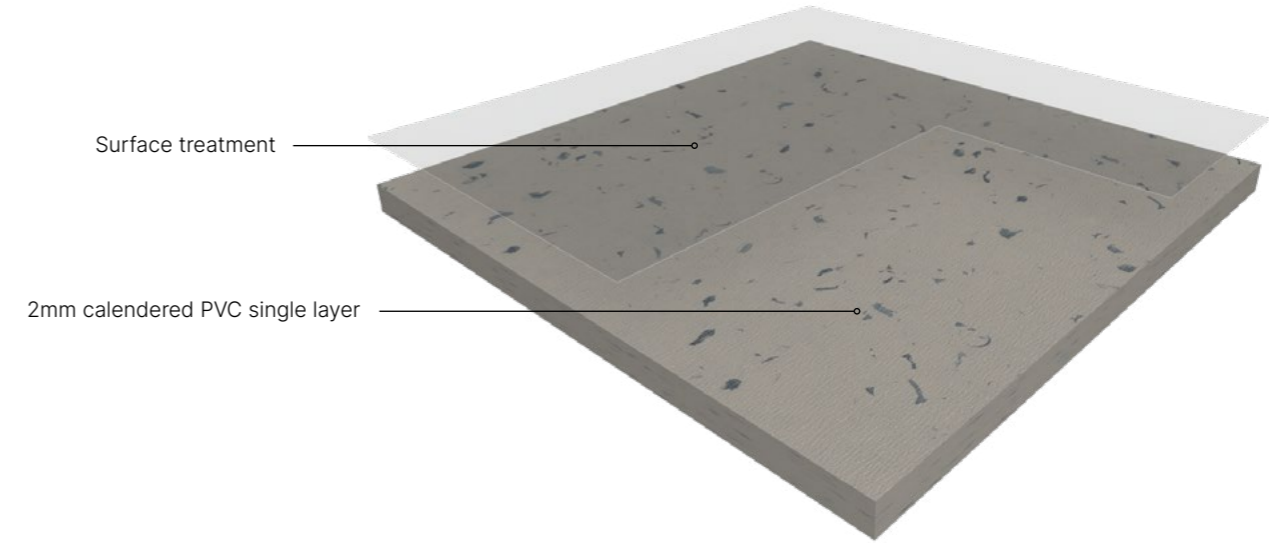
Flexible Homogeneous Vinyl Flooring

Mipolam BioControl Clean is fully flexible homogeneous compacted floorcovering in sheet, providing excellent resistance to wear and tear in high traffic areas. It therefore has a high resistance to heavy loads. Certified ISO3, it is specifically recommended for use in clean rooms. Mipolam BioControl Clean has our exclusive Gerflor patented surface treatment offering the best chemical resistance to products such as Betadine, Eosin, Hydrogen Peroxide (H₂O₂) and Hydro Alcoholic solutions, making maintenance quick and easy.



Product benefits:

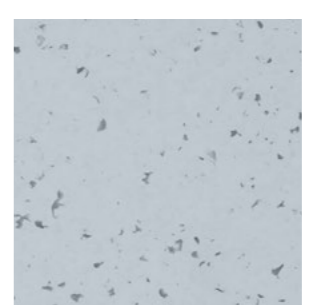
- > Treated with exclusive Gerflor surface treatment for unrivalled levels of chemical and stain resistance
- > Ideal for highly sensitive cleanroom areas for industrial applications such as pharmaceutical environments & laboratories
- > Fast installation, easy to handle, transport, cut & cove for projects where time is of the essence
- > Certified ISO 3 according to ISO14664-1 and GMP Class A compliant for use in cleanrooms



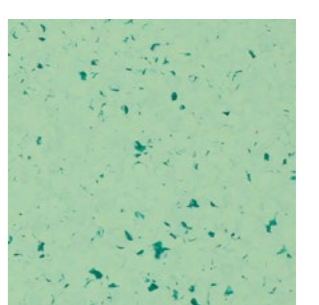
5406 Moqui
Y: 52.1



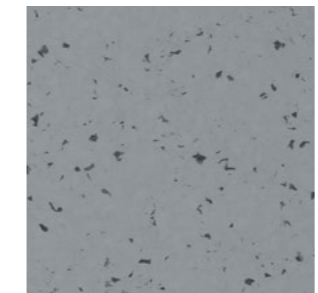
5408 Chalk Dust
Y: 65.8



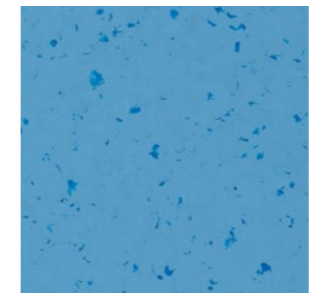
5413 Rain Fall
Y: 49.5



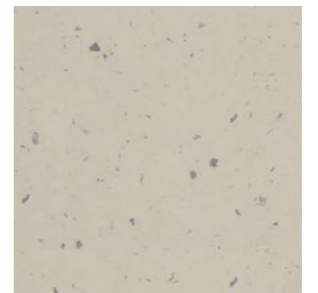
5417 Foggy Hill
Y: 39.4



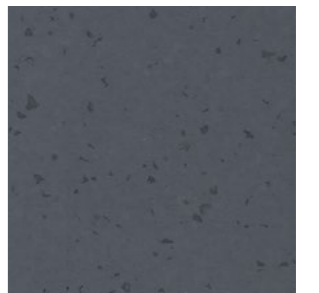
5430 Sideral Grey
Y: 27.2



5436 Tiger Eye
Y: 24.5



5441 Clay Soil
Y: 42.2



5459 Stormy Cloud
Y: 10.4

Options shown are a small selection, for full colour range [click here](#)

Watertightness Control

A unique and innovative system to check the integrity of Gerflor flooring...

The **Watertightness Control System** is an installation technique specifically designed for Gerflor flooring (excluding ESD flooring), which tests the quality of the hot welds and the integrity of the installed surfaces. Developed to assess watertightness of the installation and to audit floor integrity over time.

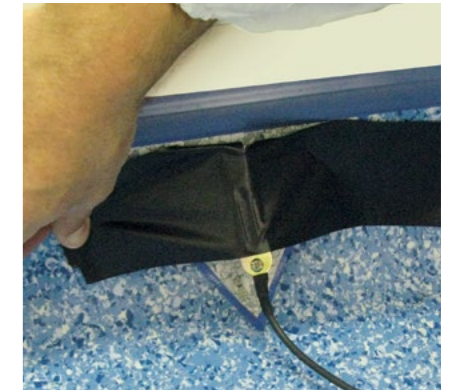
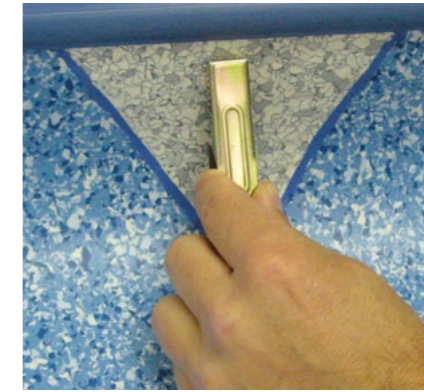
...Developed to satisfy users requirements

The watertightness control system has been tested and specified by the largest laboratories in the pharmaceutical industry. It is designed to fully satisfy the hygiene and microbial decontamination recommendations specified in the GMP guide.

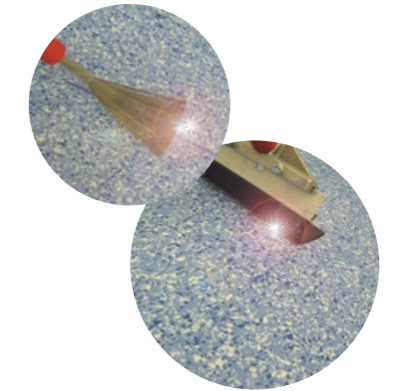


4 Step Validation

1 Connect the tester



2 Check the welds



Electric arc + warning sound = defect

3 Check the surfaces



4 Do any repairs and a final test

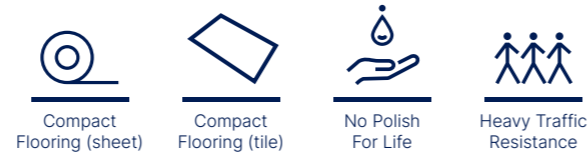


Mipolam EL7

ESD Vinyl Flooring

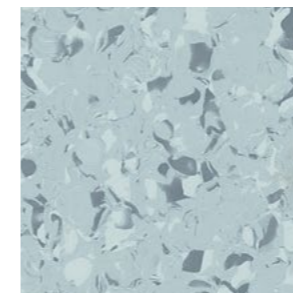
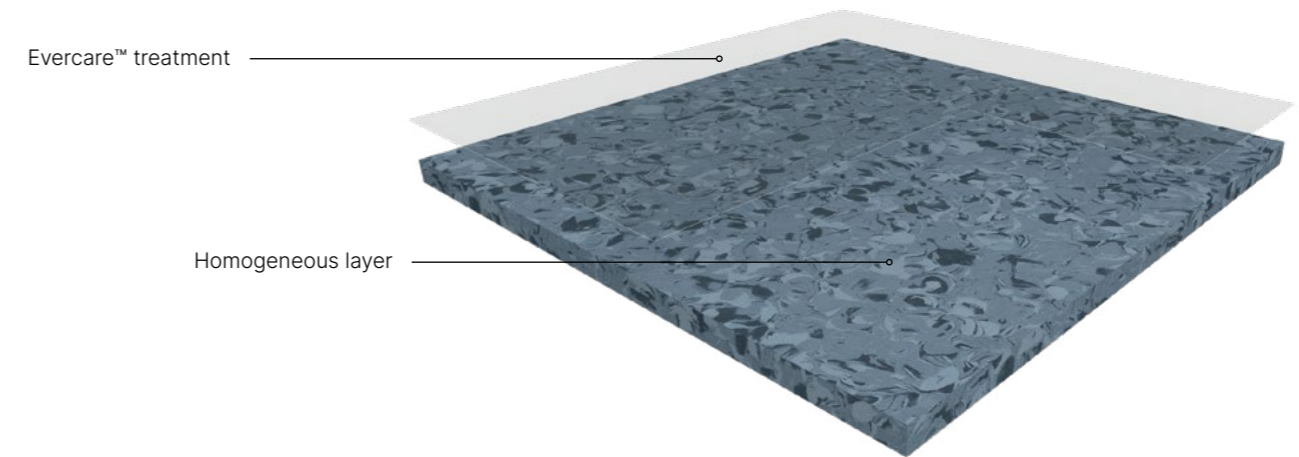
Mipolam EL7 is a dissipative flexible homogeneous vinyl floorcovering available in both sheet and tile.

The 2mm homogeneous material is calendered and pressed. It has permanent antistatic properties 2000 Volts (EN1815). It acts as a continuous dissipative $10^6 < Rt < 10^8$ (EN 1081).

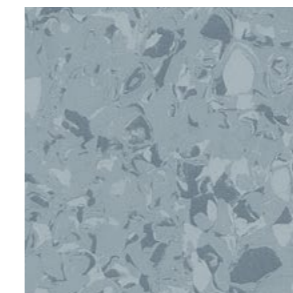


Product benefits:

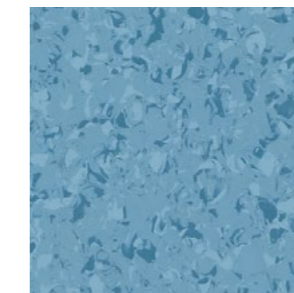
- > Suitable for heavy traffic areas
- > Permanent dissipative flooring: $10^6 < Rt < 10^8$
- > Palette of 10 semi-directional designs coordinated to Mipolam Affinity range
- > Revolutionary Evercare™ surface treatment providing unrivalled chemical and scratch resistance
- > No polish is required for the entire lifetime of the product – reducing maintenance costs
- > Available in stock in rolls 2m x 20m - tiles only available upon request



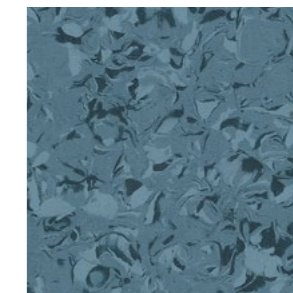
4110 Violet Grey
Y: 46.3



4120 Silver Grey
Y: 33.1



4116 Sapphire
Y: 31.9



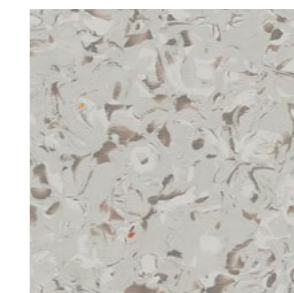
4166 Thistle
Y: 16.8



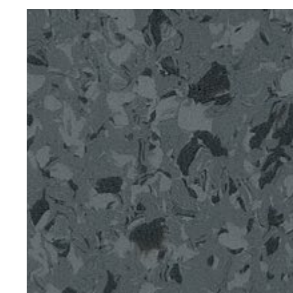
4101 Quartz
Y: 64.6



4124 Smoked Opal
Y: 52.1



4111 Raffia
Y: 48.5



4159 Grey Storm
Y: 10.8

Options shown are a small selection, for full colour range [click here](#)

Mipolam EL5

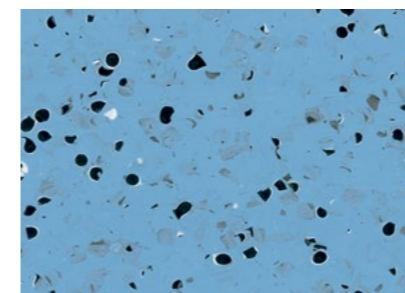
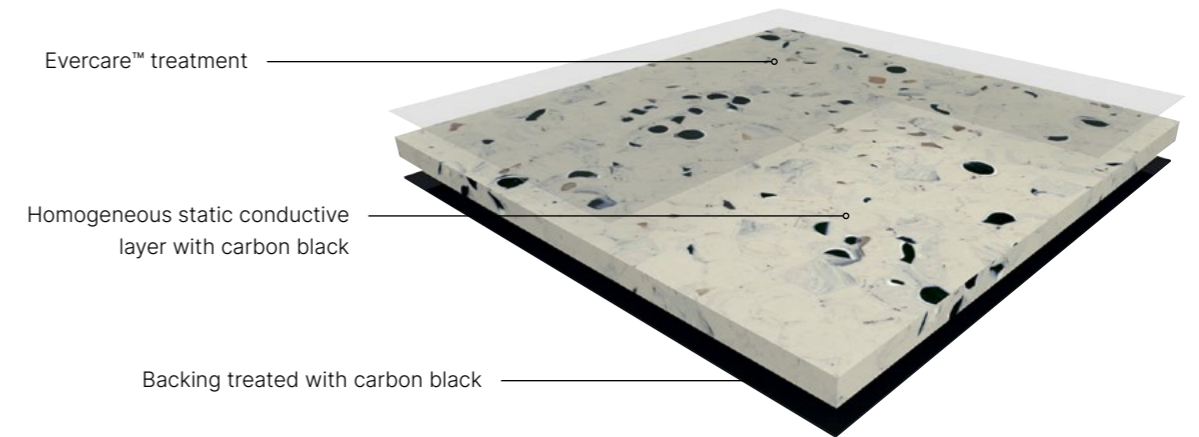
ESD Vinyl Flooring

Mipolam EL5 is a conductive flexible homogeneous vinyl floorcovering available in sheet form. The 2mm homogeneous material incorporates carbon encapsulated granules throughout its full thickness and has a conductive backing to ensure optimal and consistent conductive properties throughout its full life expectancy. It has permanent antistatic properties (< 20 V).

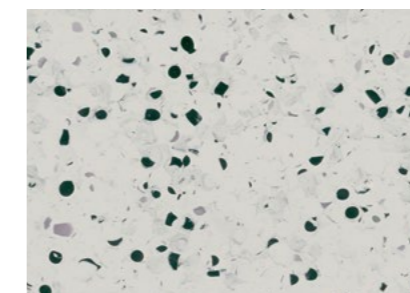


Product benefits:

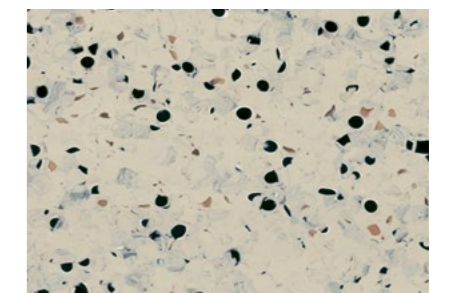
- > Suitable for heavy traffic areas
- > Available in sheet format
- > High electrical resistance ($R_t < 10^6 \Omega$ according to EN 1081)
- > No polish is required for the entire lifetime of the product – reducing maintenance costs
- > Revolutionary Evercare™ surface treatment providing unrivalled chemical and scratch resistance



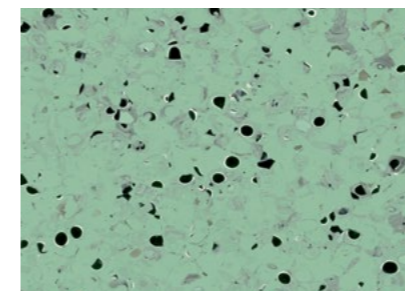
0354 Blue
Y: 33.4



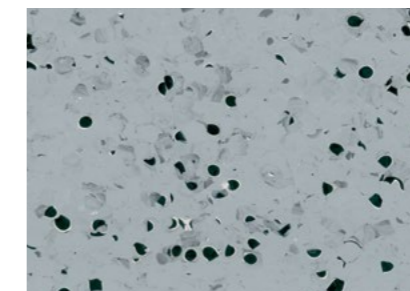
0350 Light Grey
Y: 58.2



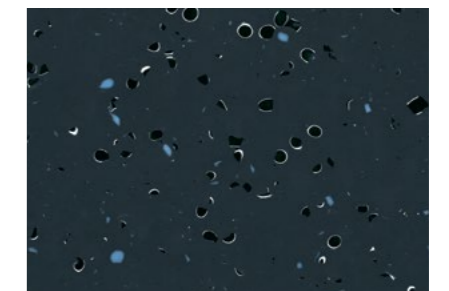
0353 Beige
Y: 48.4



0355 Green
Y: 36.7



0352 Grey
Y: 35.5



0351 Black
Y: 7

For full product details [click here](#)

GTI® EL5 Cleantech

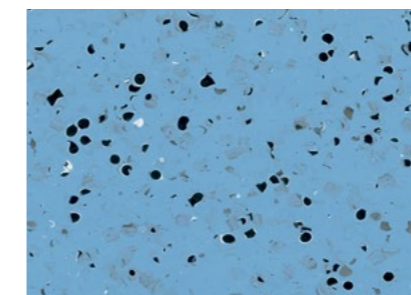
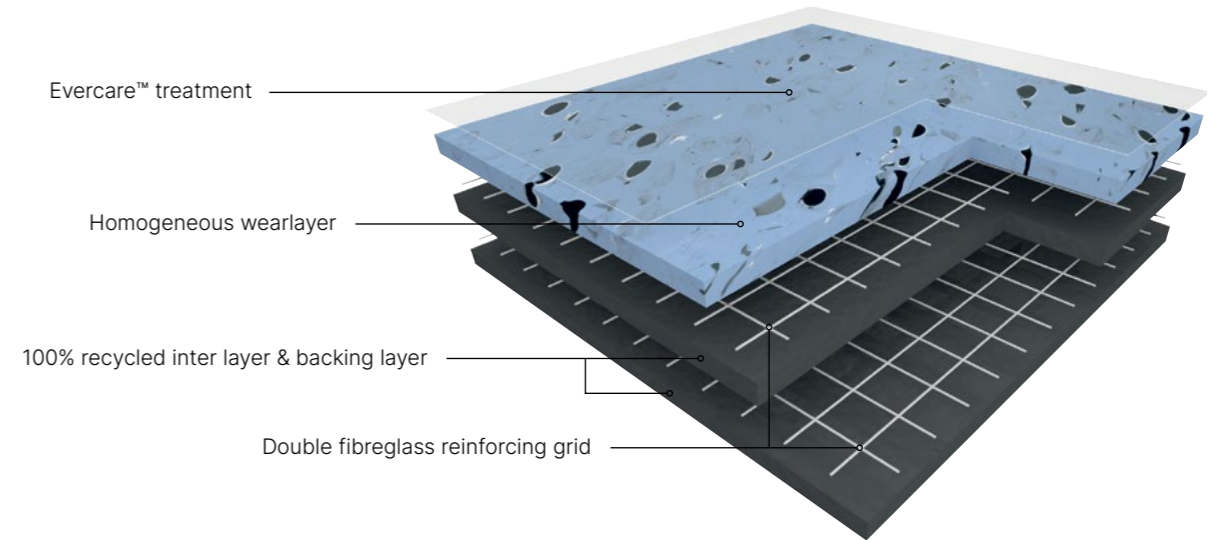
Renovation Solutions

GTI® EL5 Cleantech is an electro conductive, looselay, heavy-duty tile with outstanding resistance to traffic. It is available in a square format with welded joints for clean environments and watertight systems.

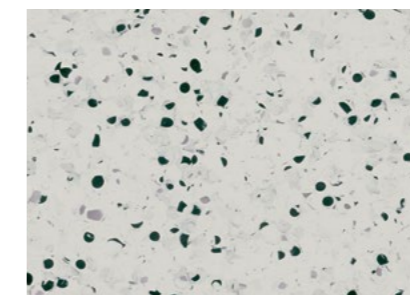


Product benefits:

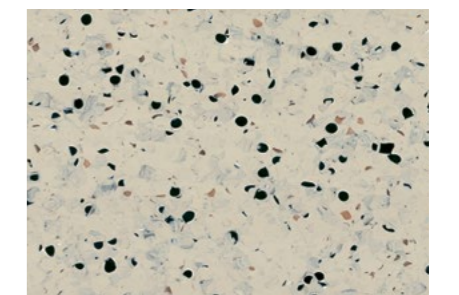
- > Suitable for high traffic in industrial areas
- > Electro conductive flooring - 5×10^4 Ohms $< 10^9$ according to ANSI S20.20 and IEC 61340-5-1
- > Cleantech tiles provide a watertight system (hot welding)
- > Revolutionary Evercare™ surface treatment providing unrivalled chemical and scratch resistance
- > GMP Class A cleanroom compliant



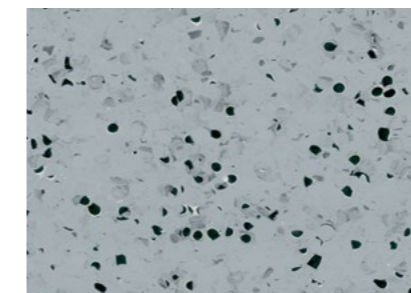
0354 Blue
Y: 33.4



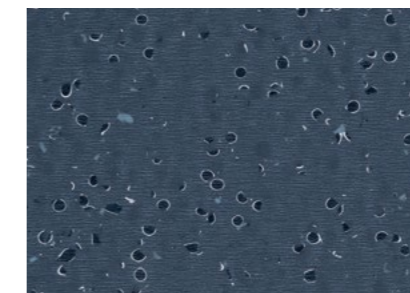
0350 Light Grey
Y: 58.2



0353 Beige
Y: 48.4



0352 Grey
Y: 35.5



0351 Black
Y: 7

For full product details [click here](#)

GTI® EL5 Connect

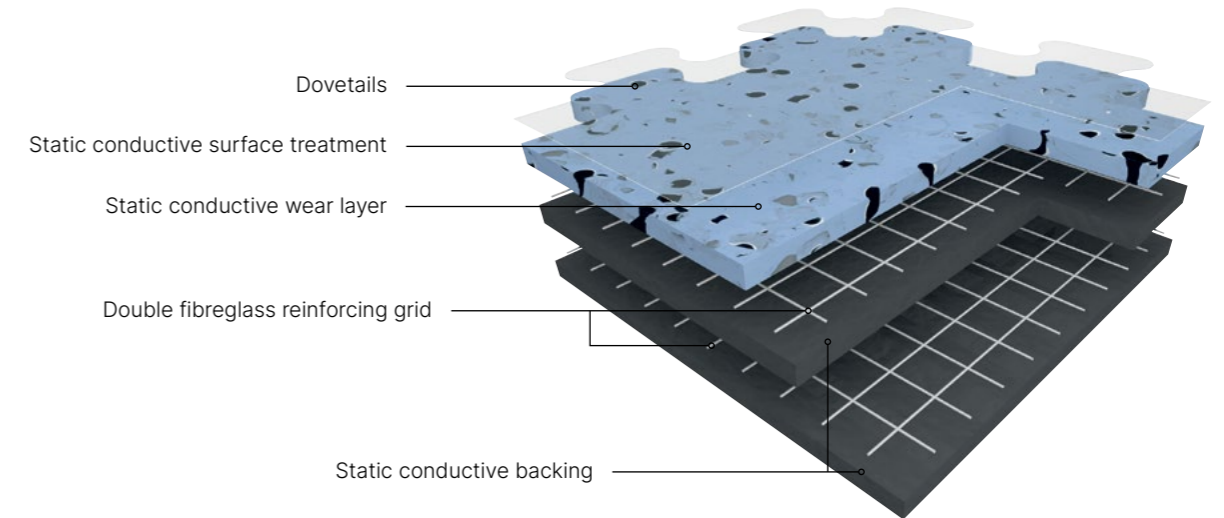
Renovation Solutions

GTI® EL5 Connect is an electro conductive, looselay, heavy-duty tile with outstanding resistance to traffic. It is available in an interlocking tile format with dovetails for fast and easy installation.



Product benefits:

- > Suitable for high traffic in industrial areas
- > Electro conductive flooring - $5 \times 10^4 \text{ Ohms} < 10^9$ according to ANSI S20.20 and IEC 61340-5-1
- > Interlocking tiles provide fast installation so therefore no downtime during installation
- > Revolutionary Evercare™ surface treatment providing unrivalled chemical and scratch resistance



For full product details [click here](#)

GTI Max

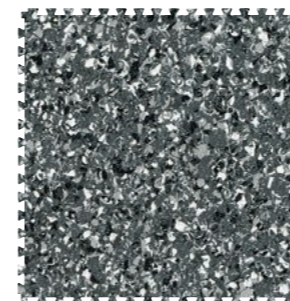
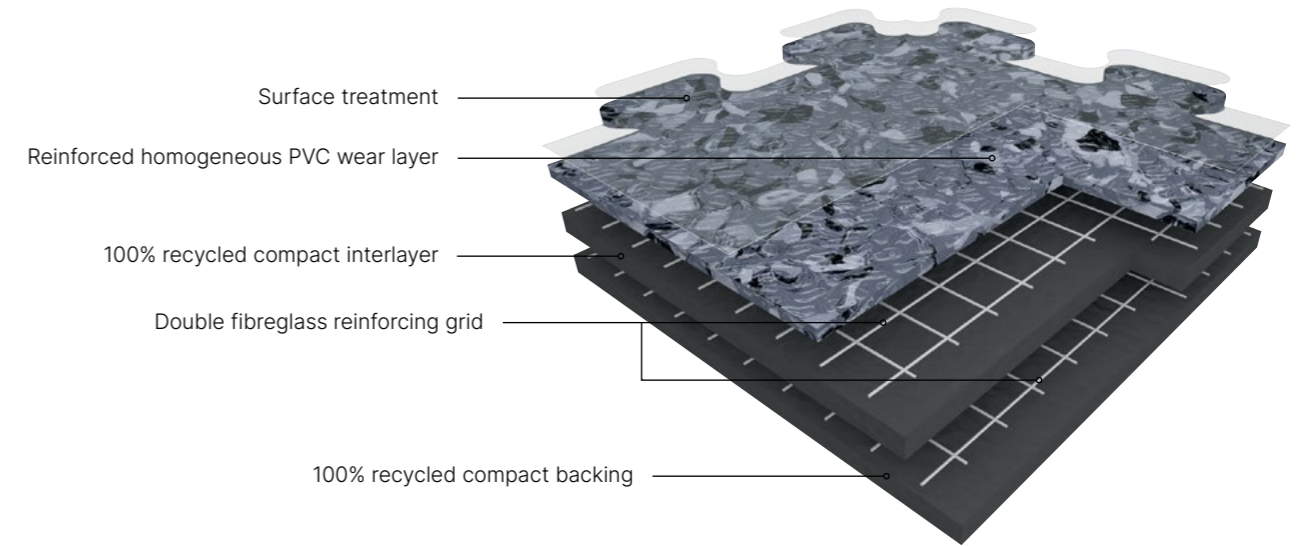
Fast Track Flooring Tiles

GTI Max is an ideal solution for heavy traffic applications and are popular choices for industrial and warehousing environments. A fast renovation solution which can be installed over most existing floors where minimal sub floor preparation is required, as well as no adhesives. Cost effective solutions both in the installation (you do not need to stop production or close the premises) and in terms of easier maintenance (with PUR+ surface treatment).

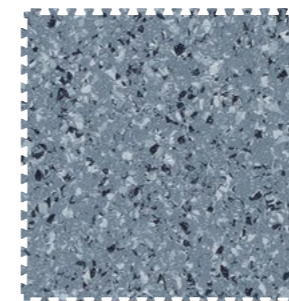


Product benefits:

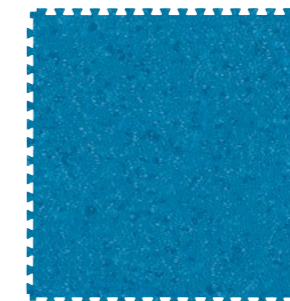
- > Tough and durable, suitable for high traffic in industrial areas
- > Interlocking tiles for fast installation and replacement of tiles
- > Low maintenance due to Polyurethane (PUR+) surface treatment



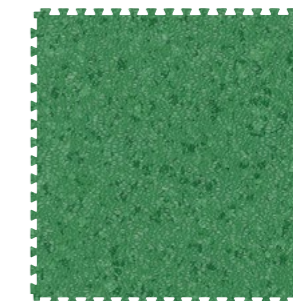
0249 Carbon
Y: 16.1



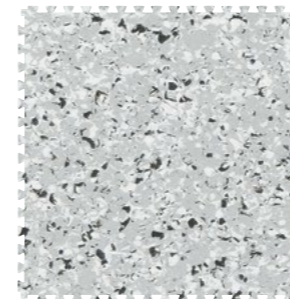
0252 Titanium
Y: 20.2



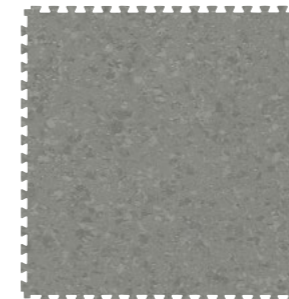
0230 Blue
Y: 14.8



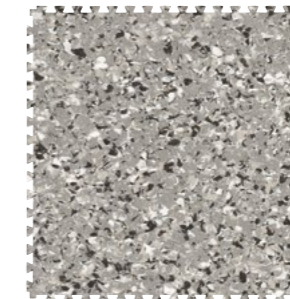
0233 Green
Y: 16.9



0268 Ermellino
Y: 54.6



0259 Grecale
Y: 23.6



2264 Piton
Y: 37.4



2265 Merapi
Y: 47.1

Options shown are a small selection, for full colour range [click here](#)

GTI Accessories



0001 Caution



0004 Stop



0003 Arrow



0002 Forklift



0005 No entry



0006 Pedestrian



GTI Logo Tiles

Available on request for ease of signage, safety and way finding in important zones within a facility or simply to uplift and promote a company brand within an area.

Anti-bounce Mallet

Combining Ergonomic design with anti-fatigue technology the Anti-bounce mallet ensures user comfort and ease when conjoining the GTI Connect tile ranges interlocking dovetail edges.

For full details [click here](#)



ESD Copper Strip

Installation of conductive products on top of conductive strip is essential for the flooring to meet published electrical resistance performances. Refer to our installation guide for instructions.

For full details [click here](#)



Conductive Weld

Used in conjunction with our GTI EL5 cleantech ESD flooring range to ensure static charge is transfers across each tile, available in all matching colours.

For full details [click here](#)



Industrial Tile

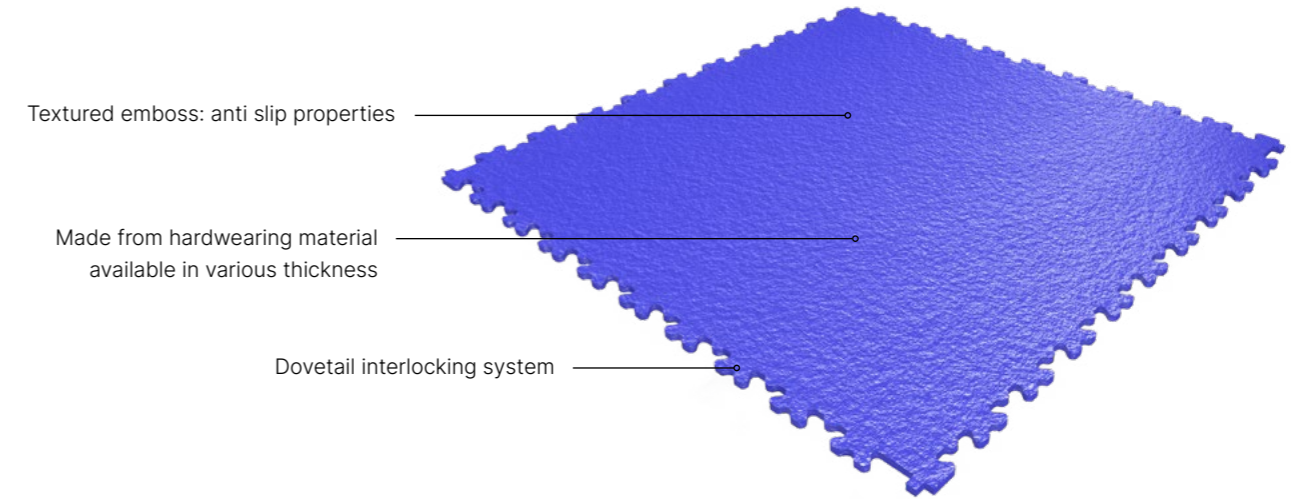
Renovation Solutions

Industrial Tile is a revolutionary industrial tile designed for outstanding durability and quick installation. Available in solid block colours, with minimal subfloor preparation.



Product benefits:

- > Tough and durable, suitable for high traffic in industrial areas
- > Interlocking tiles for fast installation and replacement of tiles
- > Low maintenance due to Polyurethane (PUR+) surface treatment



Options shown are a small selection, for full colour range [click here](#)

Tarasafe Safety Floor

Wet Area Solutions

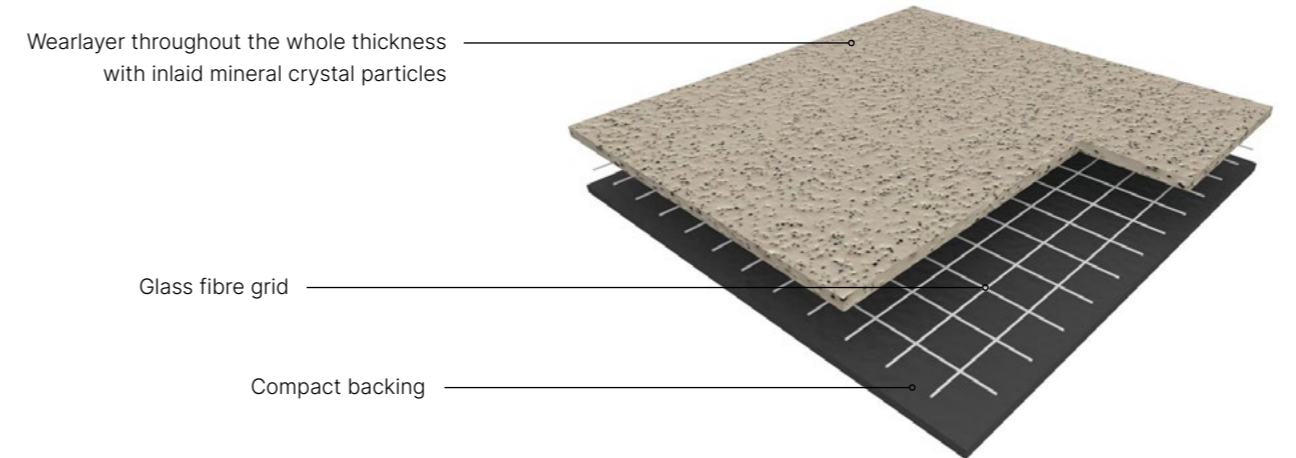
For safety reasons, some rooms can require higher non-slip values than standard (R9 according to DIN 51130).

This is true of washrooms, showers and other rooms where standing water forms in everyday use, or in the agri-food industry in general where liquid, powder or oil is regularly present on the floor.



Product benefits:

- > Dense concentration of deep anti-slip inlaid particles throughout the wear layer
- > Reinforced with a glass fibre grid, suitable for use in all areas of heavy traffic where slip-resistance, durability and hygienic conditions are required



Example shown: Tarasafe Super

T WEAR GROUP
Wear Group

12 YEARS
12 Years Warranty

R10
Slip Resistant (Plus)

R12
Slip Resistant (Super)

Heavy Loads Resistance

100% Recyclable

Tarasafe Plus



7731 Marbre
Y: 51.2



7386 Savana
Y: 44.0



7767 Dove Grey
Y: 34.1

Tarasafe Super



7386 Savana
Y:44.0



7767 Dove Grey
Y: 34.1

Options shown are a small selection, for full colour range [click here](#)

Taralay Premium

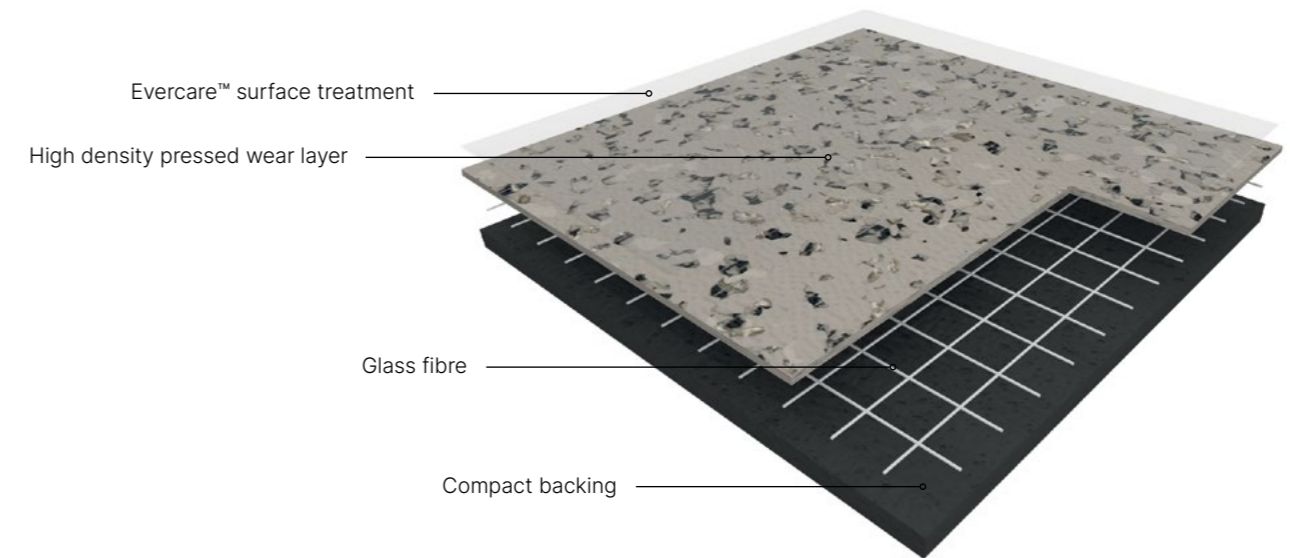
Heterogeneous Vinyl Flooring

Premium Compact is a 1mm thick, pure vinyl homogeneous wear layer with no filler, incorporating very densely pressed coloured chips, with a mat finishing and without a transparent wear layer. Its compact backing is calendared, pressed and reinforced with a glass fibre grid yielding. It offers a 8dB sound insulation, an indentation resistance of 0.02 mm and a rolling heavy loads easiness.



Product benefits:

- > Tough and durable, suitable for normal to high traffic areas
- > Revolutionary Evercare™ surface treatment providing unrivalled chemical and scratch resistance
- > No polish is required for the entire lifetime of the product - reducing maintenance costs



R10
Slip Resistant

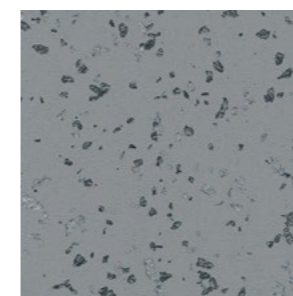
T WEAR GROUP
Wear Group

EVERCARE™
Surface Treatment

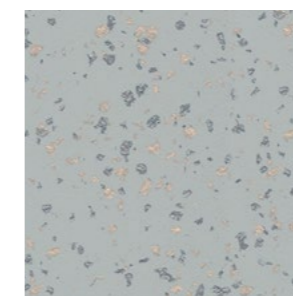
Matt Surface

100% Recyclable

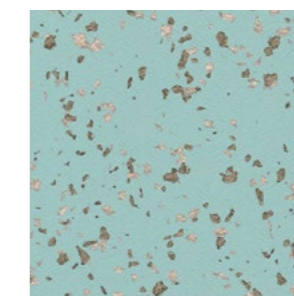
VOC < 10 µg/m3



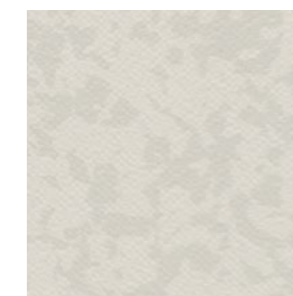
2751 Slam
Y: 30.7



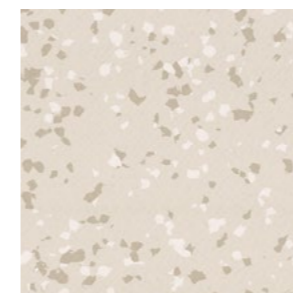
2750 Ellipse
Y: 45.1



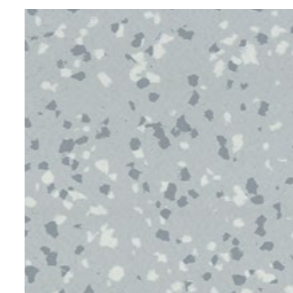
8621 Ode
Y: 50.0



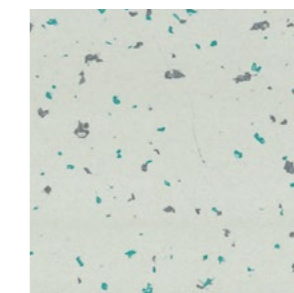
4364 Ivory New
Y: 61.1



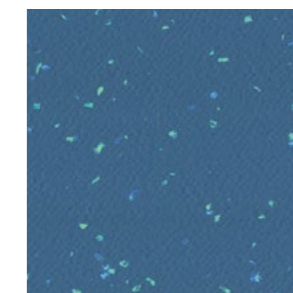
8386 Boa Vista
Y: 63.7



8736 Recife
Y: 54.8



4002 Manua
Y: 63



4476 Wattaru
Y: 12.4

Options shown are a small selection, for full colour range [click here](#)

Taralay Impression Compact

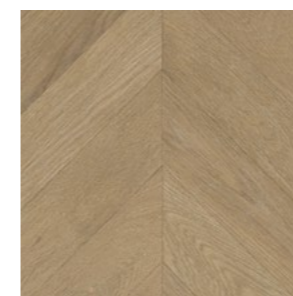
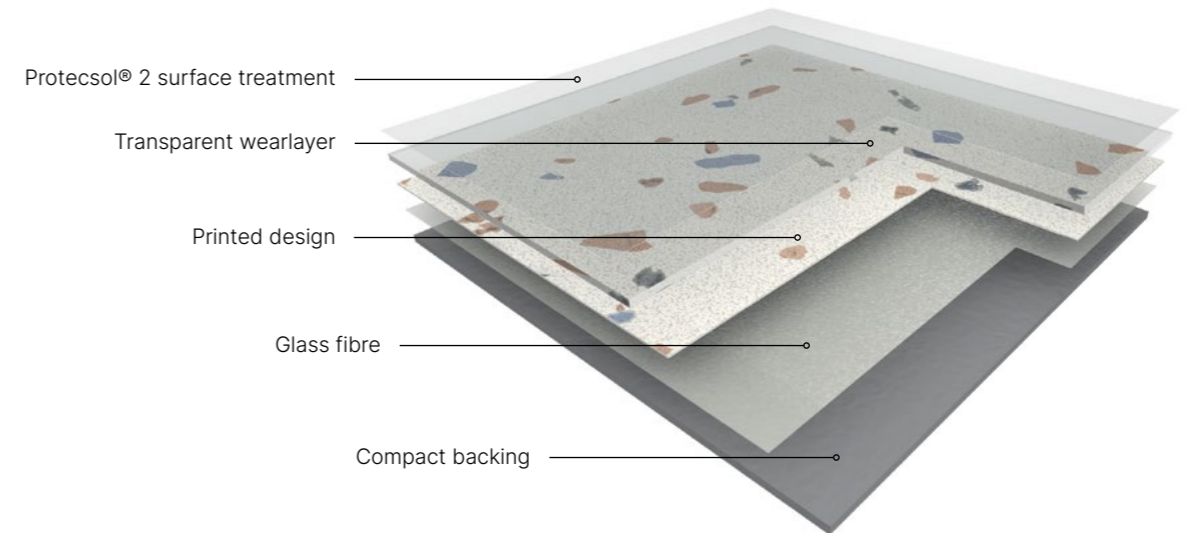
Heterogeneous Flooring

Taralay Impression Compact is a hard-wearing floor that is suitable for medium to high traffic areas. The range has ultra-low whole life costs thanks to the ProtecSol® 2 surface treatment which eliminates the need for polish for the full life of the flooring.



Product benefits:

- > Tough and durable, suitable for normal to high traffic areas
- > ProtecSol® 2 surface treatment for unrivalled levels of stain and chemical resistance
- > Available in a choice of 96 contemporary colours and designs for interiors



1110 Rivau Nature
Y: 30.0



1053 Nature Oak Blond
Y: 36.8



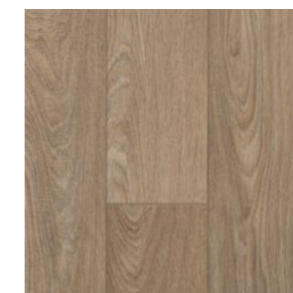
1092 Uni Matt Light Beige
Y: 48.2



1025 Cemento Firenze
Y: 22.0



0543 Cemento Brescia
Y: 32.5



1069 Habana 3D Trinidad
Y: 24.7



1068 Gentlemen Denim
Y: 23.2



1060 Terrazzo Napoli
Y: 63.7

Options shown are a small selection, for full colour range [click here](#)

Clean Corner System

ISO and GMP standards require industries to have easy to clean and easy to decontaminate cleanrooms. Corners are specifically hard to maintain.

Gerflor has developed an exclusive corner solution, Clean Corner System, adapted to these requirements.



Product benefits:

- > Ultra-resistant bi-material corner profiles
- > Quick and easy cleaning and decontamination
- > Easy manoeuvring for twist upright vacuum cleaners
- > Neat and uniform design for all your corners

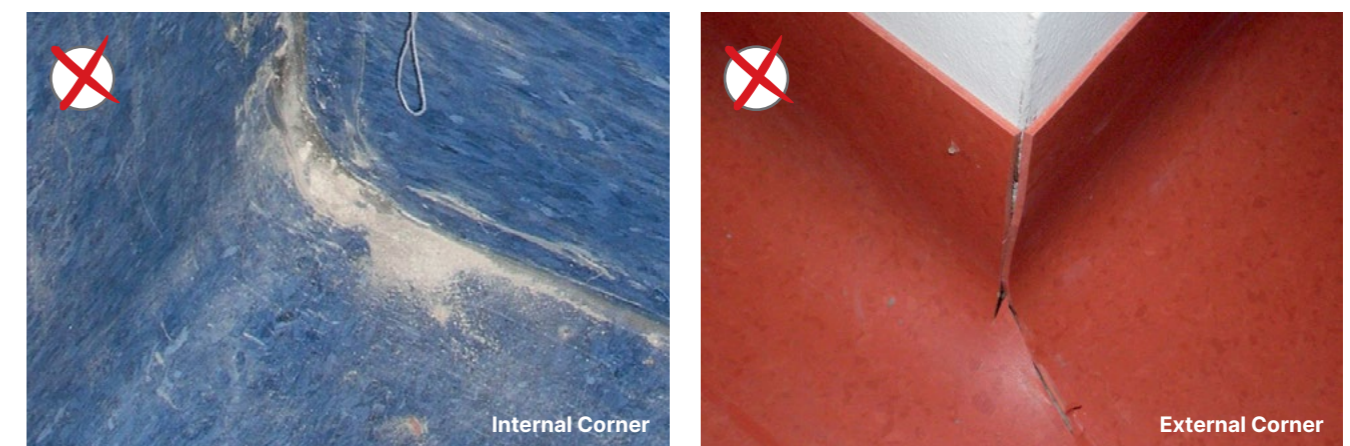
A Patented Innovative Solution



1. External floor angle
2. Internal floor angle



Before Clean Corner System



For full product details [click here](#)

Creation 55 Dryback

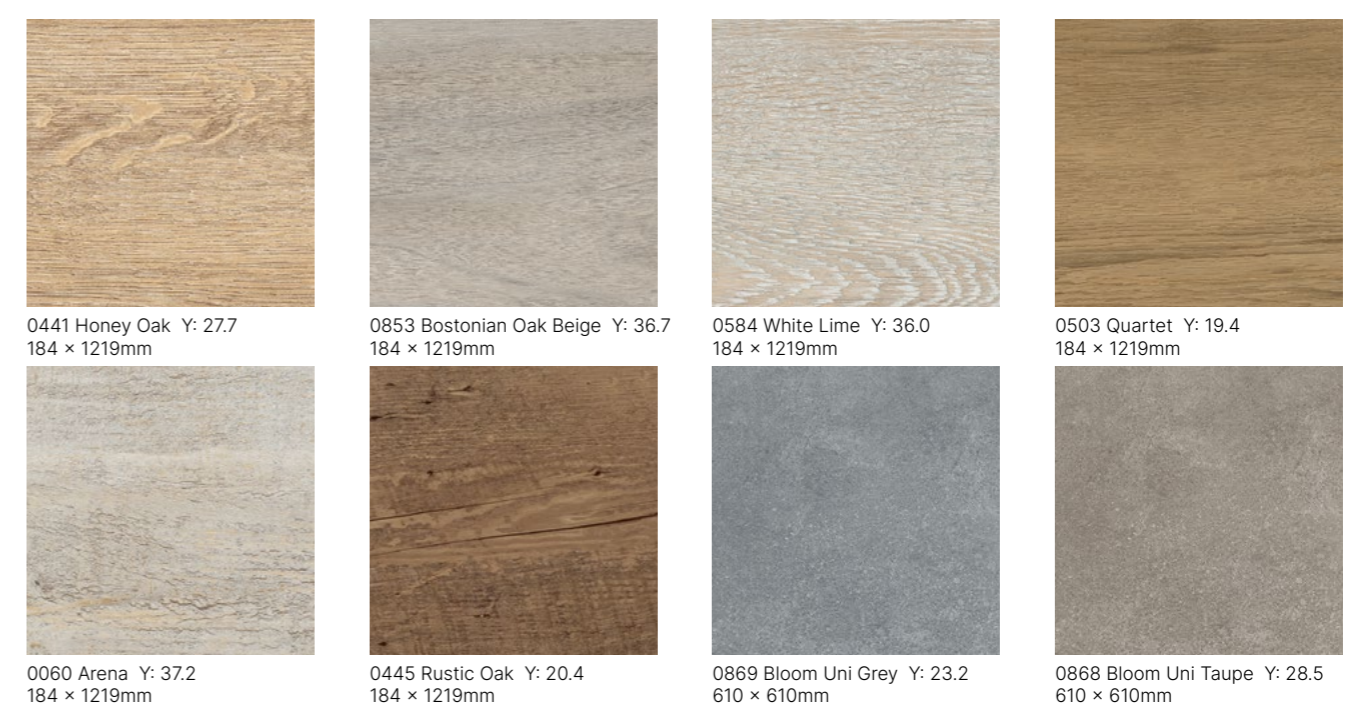
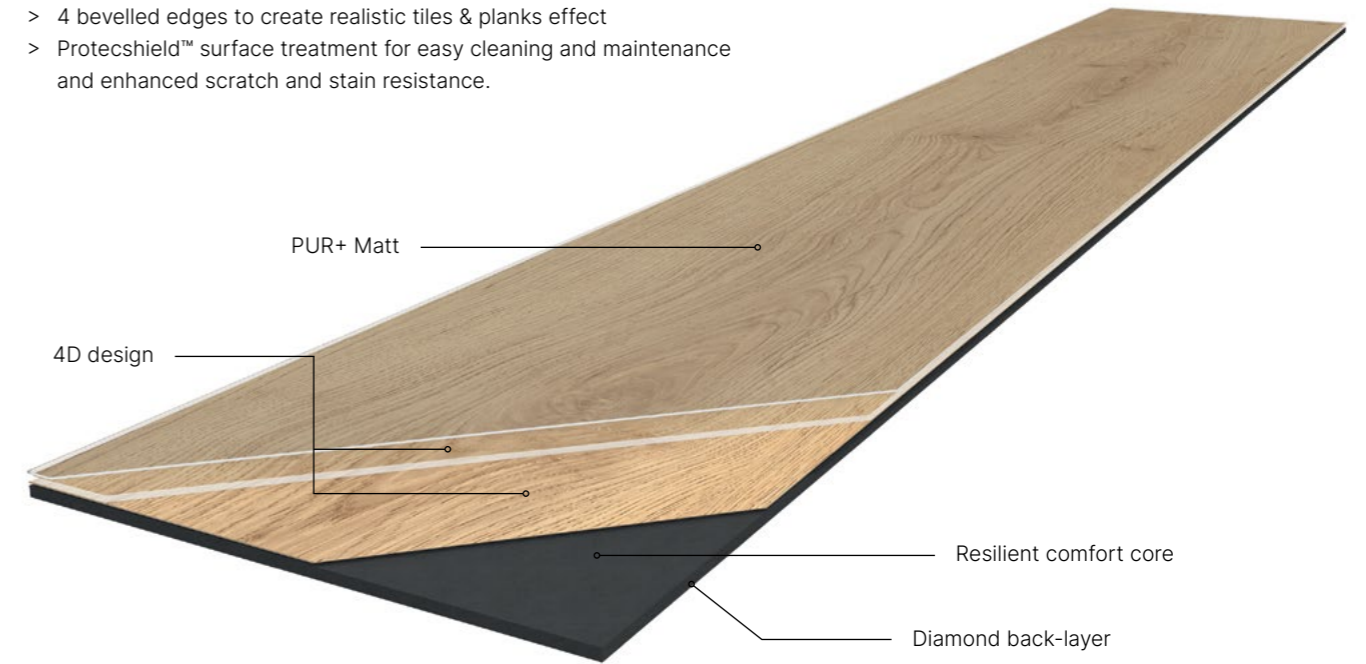
Luxury Vinyl Tiles & Planks (LVT)

Creation 55 Dryback is available in wood and mineral effect tiles and planks that can enhance any interior décor. A popular choice for medium traffic areas in the retail, office, administration, leisure, hotel, hospitality markets as well as suitable for domestic use.



Product benefits:

- > Crystal wear layer for an enhanced authentic and ultra realistic finish
- > High definition of design & structured emboss on all décors
- > 4 bevelled edges to create realistic tiles & planks effect
- > Protecshield™ surface treatment for easy cleaning and maintenance and enhanced scratch and stain resistance.



Options shown are a small selection, for full colour range [click here](#)

Lunar & Stratus

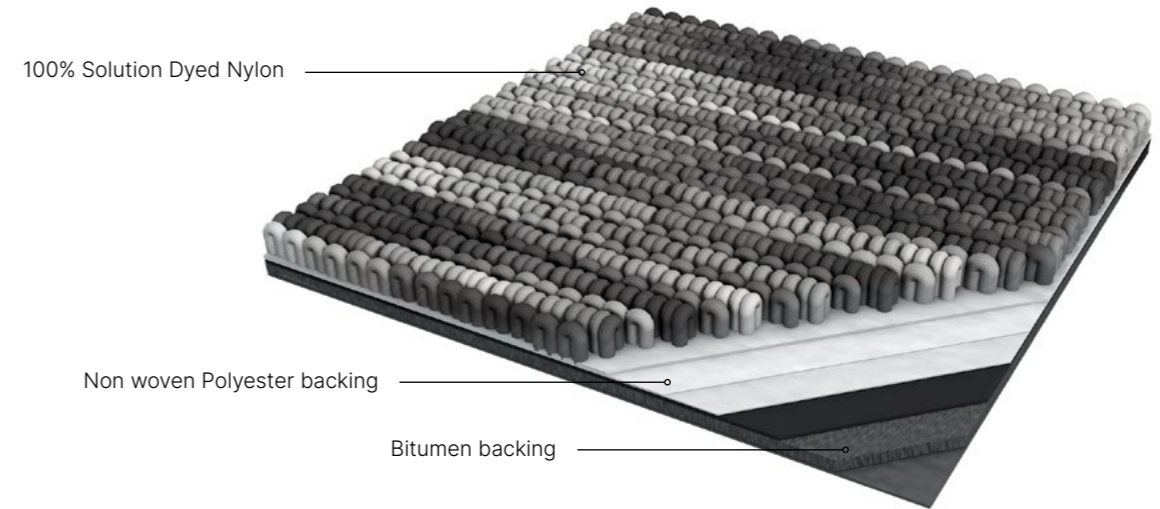
Premium Carpet

The **Gradus Carpet** collection contains a wide range of premium carpet for heavy commercial applications. Featuring acoustic properties to help reduce noise in a wide choice of designs and colours.

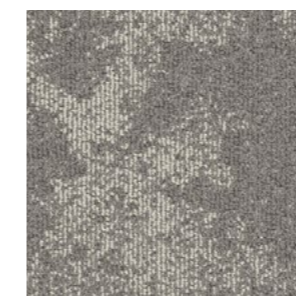


Product benefits:

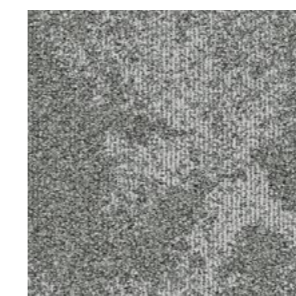
- > Plain and organic designs available
- > Take-back scheme available
- > Stratus manufactured using ECONYL® Regenerated Solution Dyed Nylon yarn
- > Lunar contains 62% recycled content, and Stratus contains 78% recycled content
- > Backing made using 75% recycled material
- > Install on subfloors with up to 75% RH (Relative Humidity)



Example shown: Lunar



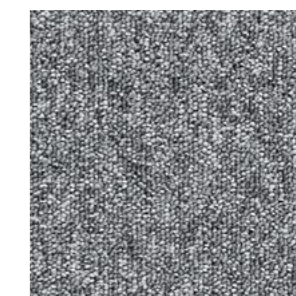
Moretus 07402
Lunar



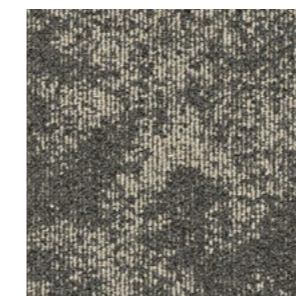
Picard 07406
Lunar



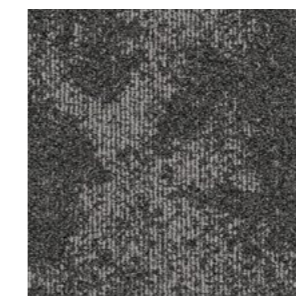
Arctic Mist 06512
Stratus



Rainfall 06503
Stratus



Alpes 07403
Lunar



Rook 07405
Lunar



Typhoon 06502
Stratus



Jet Stream 06506
Stratus

Options shown are a small selection, for full colour range [click here](#)

Mural Ultra Design

Wall Coverings

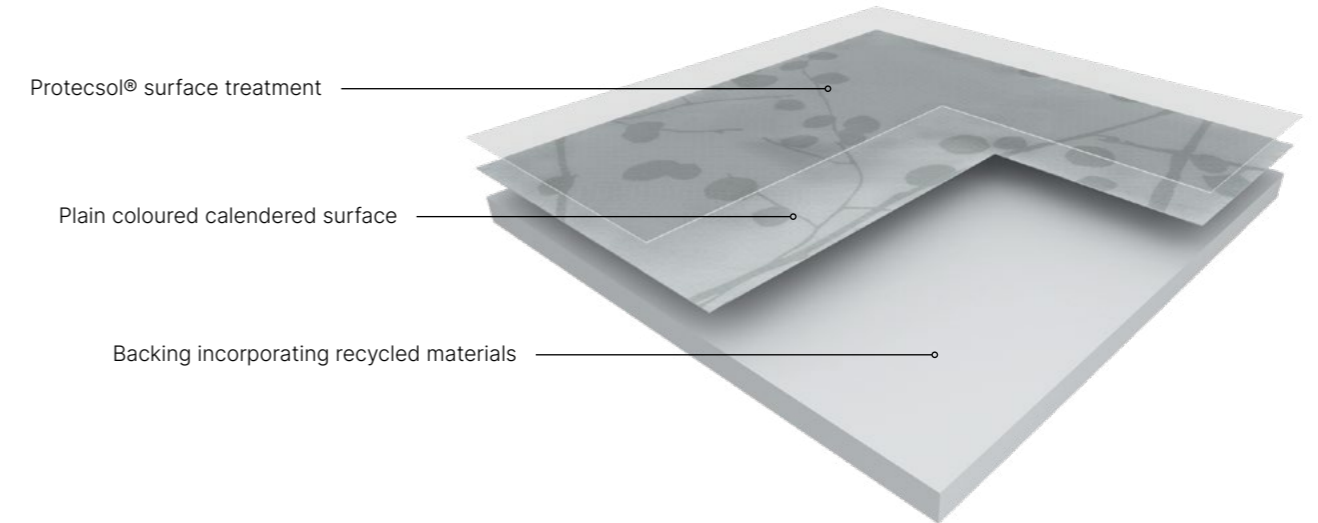
Mural Ultra Design is a 2m width flexible printed wall covering vinyl sheet, which has a thickness of 1.5mm for an extended durability.

Fully resistant to impact (EN 259), Mural Ultra Design acts as a buffer against damage from trolleys. It is ideal for use in clean rooms, warehouse and storage areas.

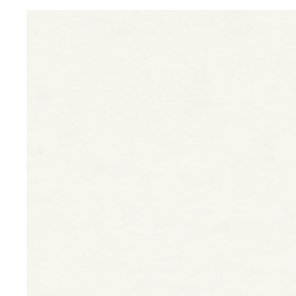


Product benefits:

- > Wall covering in 2m width roll
- > Hygienic and easy to maintain thanks to the ProtecSol surface treatment
- > B-s2,d0 fire classification
- > 100% recyclable and made from recycled materials



ProtecSol®
Surface Treatment



8611 Snow
Y: 80.3



8011 Lichen
Y: 60.6



8711 Ice
Y: 67



8408 Skyline
Y: 56.1



8740 Fabric Silk
Y: 54.8



8721 Manhattan Mist
Y: 56.7



8000 Bamboo Snow Pearl
Y: 80.7



8005 Blossom Snow Pearl
Y: 78.8

Options shown are a small selection, for full colour range [click here](#)

SureProtect Endure®

Protective Wall Cladding



SureProtect Endure PVC-u sheet is textured to conceal the effects of impact and abrasion. It can be specified as a stand-alone product or be combined with other Gradus wall protection products to create a comprehensive protection system. It helps to reduce the need to repair and re-paint wall surfaces and with minimal maintenance, optimises the appearance retention of the building interior.

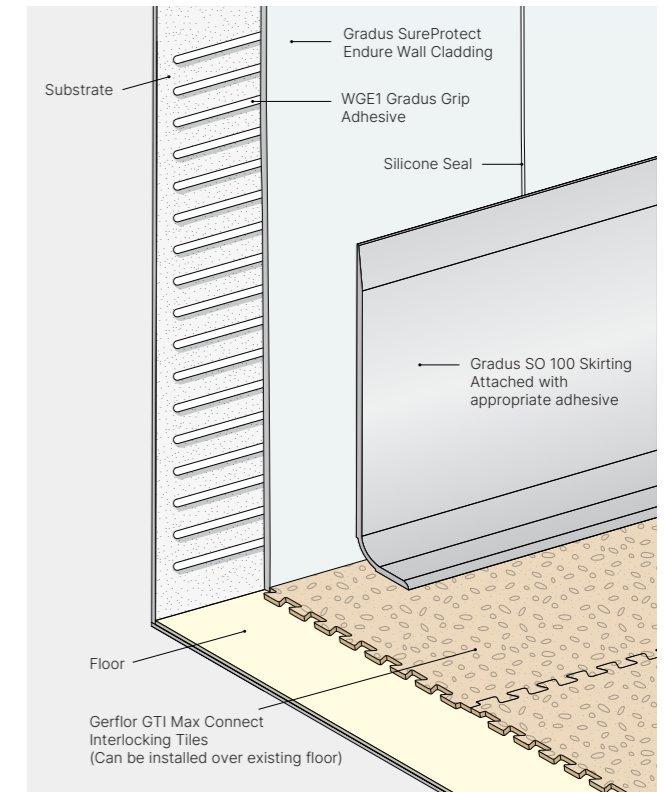


Information:

- > Supplied in sheet form with the option of finishing trims, silicone sealant and thermoforming
- > Textured PVC-u sheet available in a choice of 35 colours
- > Reaction to fire classification EN 13501-1: Class B Fire/s3 Smoke. See installation instructions for further information
- > Resistance to cleaning chemicals

SPE15N - Sheet dimensions

- > Sheet size: 2440mm x 1220mm x 1.5mm Thickness
- > Bespoke sizes also available

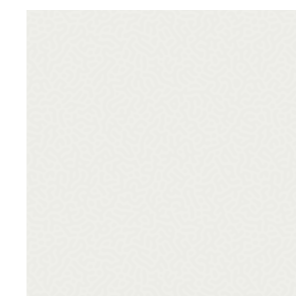


35 COLOURS
35 Colours

Thermoformable

B/s3
EN13501-1
Fire Rating

100%
Recyclable



031 Alum
LRV 71.91 | NCS S 1000-N



004 Granite
LRV 24.07 | NCS S 5502-B



003 Clay
LRV 33.86 | NCS S 4000-N



016 Glacier
LRV 59.27 | NCS S 1020-B



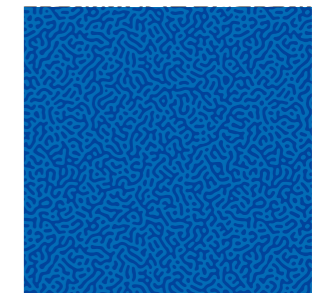
032 Flint
LRV 43.70 | NCS S 3000-N



013 Greige
LRV 38.97 | NCS S 3005-Y20R



033 Slate
LRV 7.03 | NCS S 8005-R80B



046 Indigo
LRV 10.91 | NCS S 3060-R80B

Options shown are a small selection, for full colour range [click here](#)

SureProtect Pure®

Hygienic Wall Cladding



Specifically developed for areas where cleanliness is a priority, SureProtect Pure creates an impermeable barrier to moisture and bacteria, as well as a durable solution that is resistant to impact damage. The smooth, easy to clean surface is an excellent hygienic alternative to ceramic tiles, removing the need for grout which can harbour bacteria.

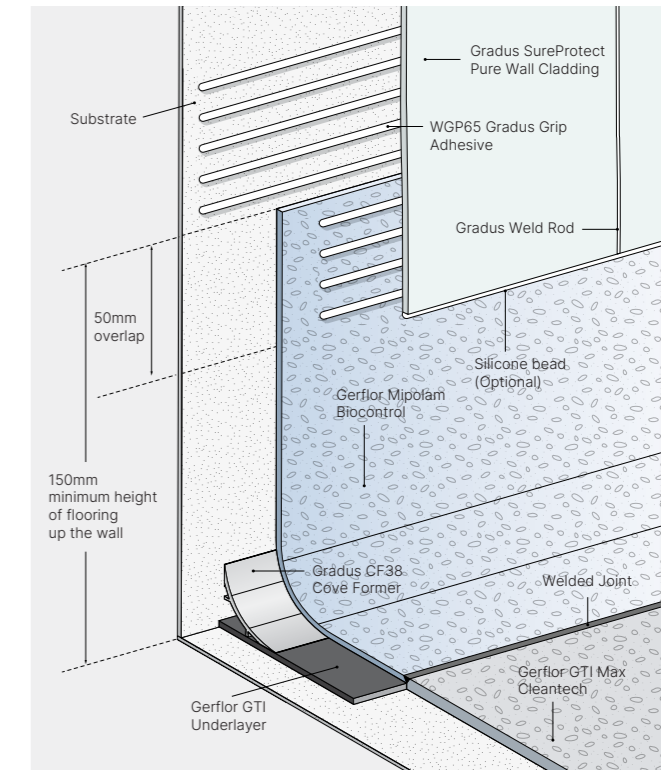


Information:

- > Smooth PVC-u sheet material in a choice of 21 colours
- > Tested for suitability in a wide range of environments
- > Range of trimming and jointing solutions
- > Reaction to fire classification EN 13501-1: Class B Fire/s3 Smoke. See installation instructions for further information
- > Complies with ISO 22196:2011 and HBN 00-09

Sheet dimensions

- > 2440mm x 1220mm x 2.5mm Thickness
- > 2500mm x 1220mm x 2.5mm Thickness
- > 3048mm x 1220mm x 2.5mm Thickness
- > Bespoke sizes also available



Satin Finish



Options shown are a small selection, for full colour range [click here](#)

SureProtect Design®

Contemporary Wall Cladding

Modern and stylish in appearance, SureProtect Design elevates building interiors whilst still offering excellent surface protection. Ideal for applications where aesthetics is important such as reception areas, offices and cafeterias.

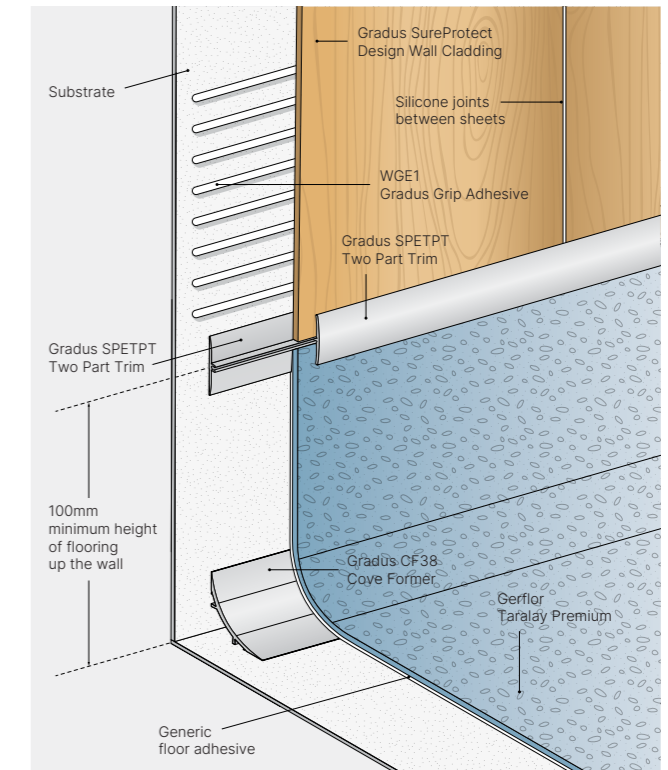


Information:

- > Supplied in sheet form with the option of silicone sealant and thermoforming
- > Reaction to fire classification
EN 13501-1: Class B Fire/s3 Smoke
See installation instructions for further information

Sheet dimensions

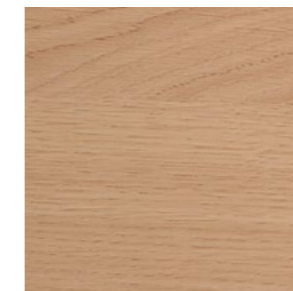
- > Sheet sizes: 3000mm x 1300mm x 2mm Thickness
- > Bespoke sizes also available



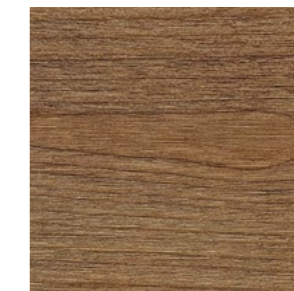
Woods - SPD20W



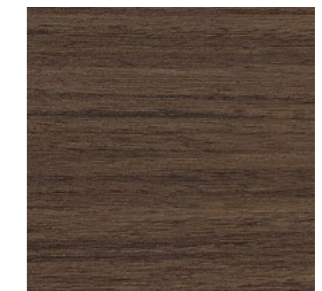
060 Maple
LRV 50.0 | NCS S 2020-Y30R



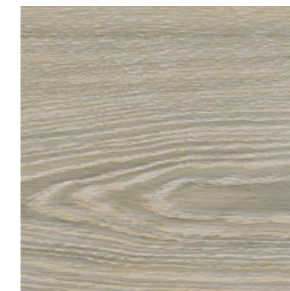
062 Light Oak
LRV 35.4 | NCS S 3020-Y30R



071 Cherry
LRV 26.39 | NCS S 4020-Y30R



070 Walnut
LRV 12.06 | NCS S 6010-Y90R



065 Stripped Pine
LRV 37.0 | NCS S 4005-Y20R



069 Brown Cedar
LRV 18.4 | NCS S 6005-Y50R



068 Smoky Cedar
LRV 10.5 | NCS S 7502-B

For full product details [click here](#)

Wall Protection Systems

Gradus Wall Protection Systems are essential in industrial facilities like labs and manufacturing plants to prevent damage from equipment, chemicals, and frequent movement of materials. They help maintain a clean, safe environment, reduces maintenance costs, and ensures compliance with safety regulations. Effective wall protection also enhances the longevity and appearance of the facility.

For full product details [click here](#)



Stainless Steel Corner Guard



Stainless Steel Wall Guard



Stainless Steel Bollard



Stainless Steel Floor Rail



PVC-u Corner Guard



PVC-u Wall Guard

Safety & Protection Systems

Gradus Safety & Protection Systems are engineered to safeguard buildings and equipment in manufacturing, high-tech, and laboratory environments. They provide both visual and physical barriers to impact, minimizing damage when it occurs. These systems enhance pedestrian safety by separating vehicles and pedestrians, reducing accident risks. This comprehensive range is ideal for areas like production floors, clean rooms, and research labs.

For full product details [click here](#)



Bollards



Heavy Duty Rubber



Safety Barrier



Protection Posts



Handrail System

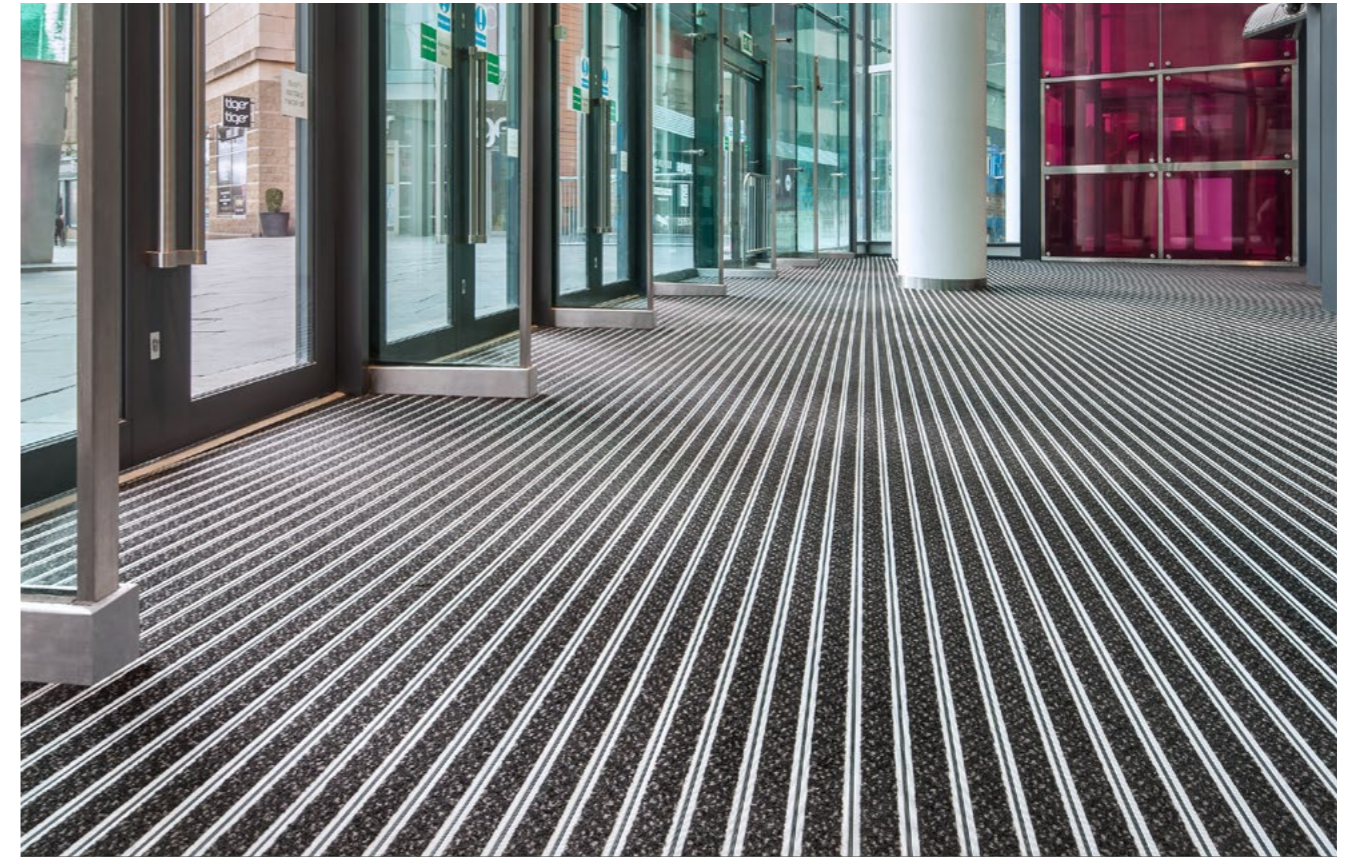


Aluminium Chequer Plate

Barrier Matting Systems

Gradus Barrier Matting is perfect for manufacturing plants, labs, and high-tech facilities. It effectively traps dirt and moisture, ensuring a clean and safe environment. Its durability and easy maintenance make it ideal for high-traffic areas, reducing wear and tear on flooring and enhancing overall hygiene and safety standards.

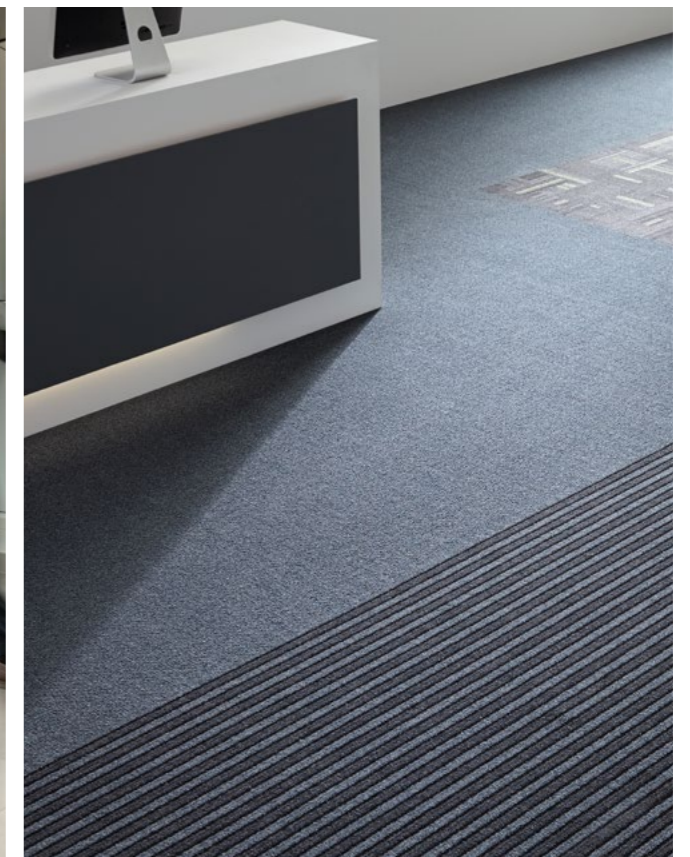
For full product details [click here](#)



Primary Barrier Matting



Hybrid Barrier Matting

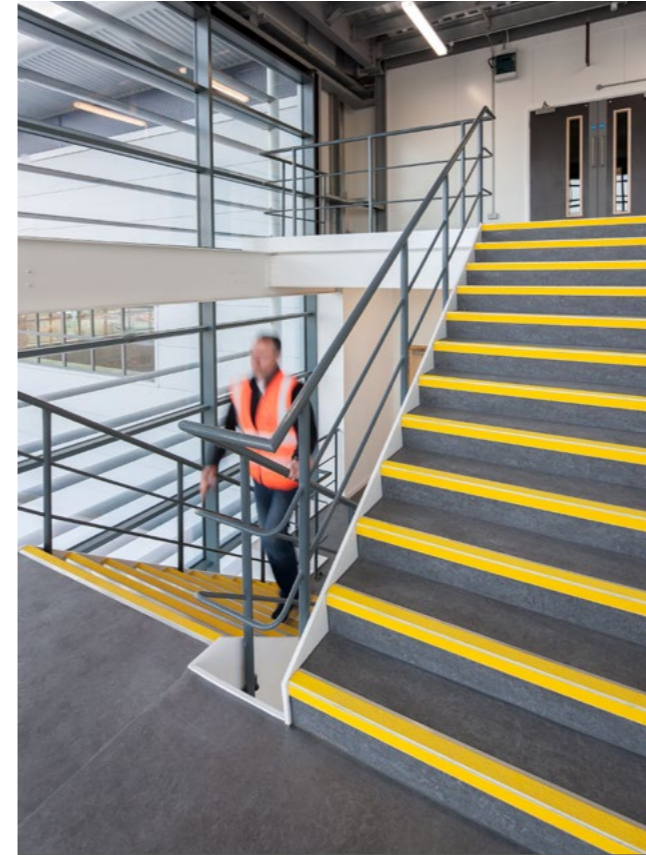
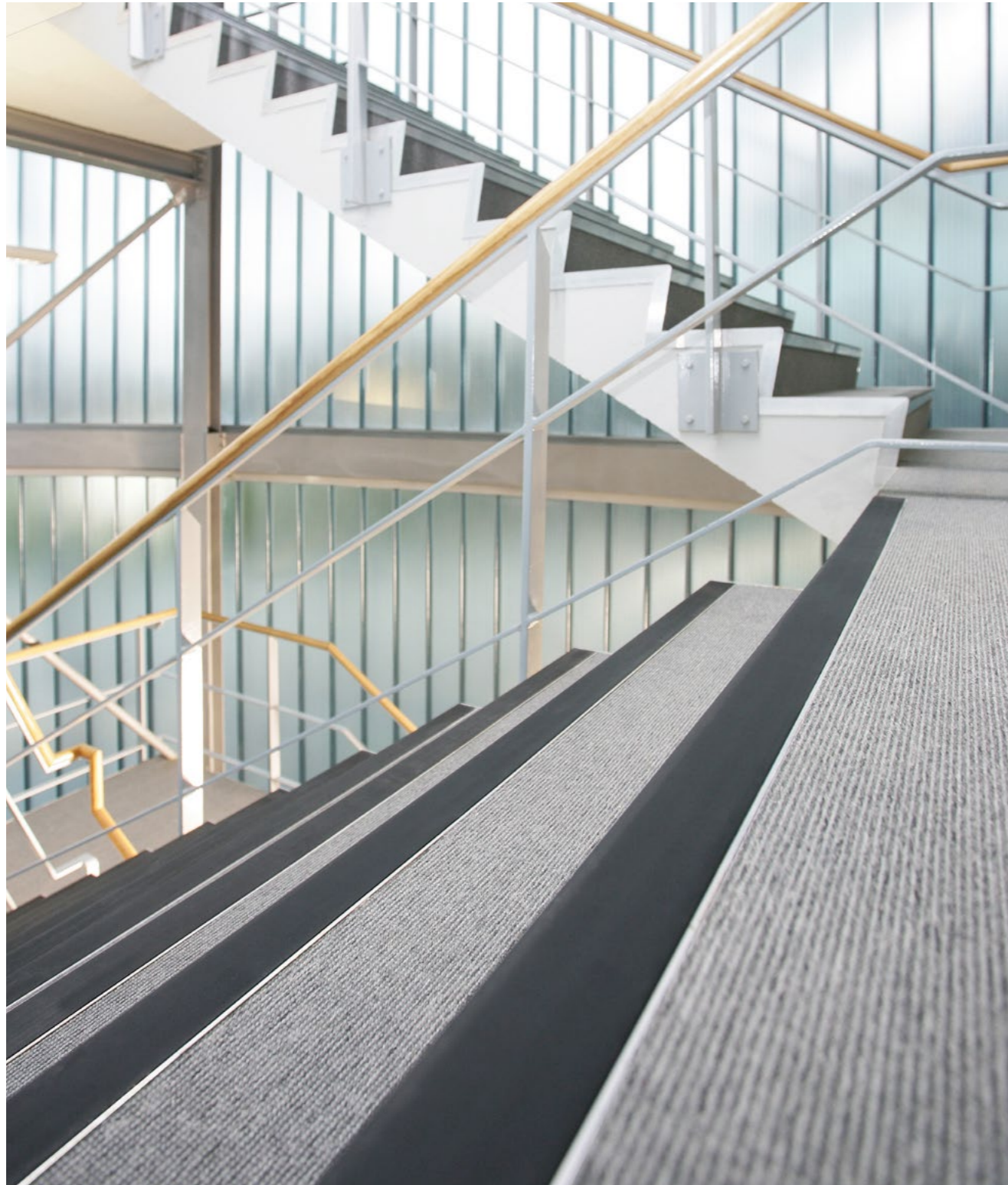


Secondary Barrier Matting

Stair Edgings & Flooring Accessories

Gradus Stair Edgings & Flooring Accessories are ideal for manufacturing plants, labs, and high-tech facilities. They enhance safety by providing slip resistance and visibility on stairs. Their durability withstands heavy traffic, while their easy maintenance ensures a clean environment. These features contribute to a safer, more efficient workspace.

For full product details [click here](#)



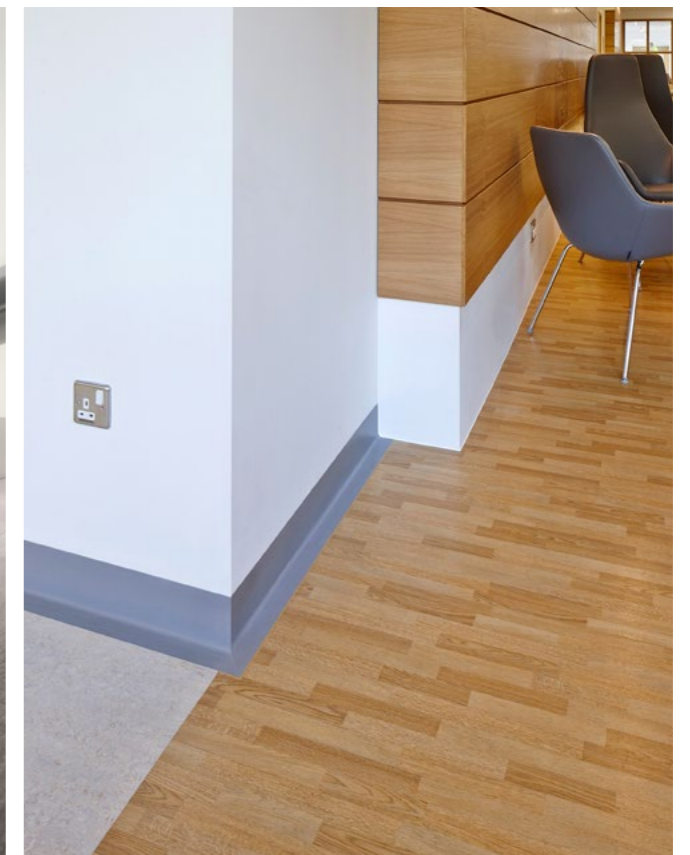
Stair Edgings



Transition Strips



Skirtings, Capping & Covings



Innovation, Service & Design



Surface Treatment & Cleaning

Exclusive surface treatments applied by UV laser cross linking provides superior durability and an even surface thickness, creating an impenetrable barrier against stains and chemicals found in laboratories. Our surface treatments create a 100% non-porous barrier to all liquids and chemicals, keeping all stains floating on the surface allowing for simple and easy stain removal saving water and detergent usage. Longevity of design and lasting colour brightness creates a longer life expectancy due to resistance to heavy traffic and micro-scratches
ANTI-BACTERIAL ISO 22196: 99% & ANTI-VIRAL ACTIVITY ISO 21702: 99,7% AFTER 2 HOURS Very low VOC (Volatile Organic Compound) emissions for better indoor air quality.



Floor Plan Design Service

For projects, Gerflor & Gradus offer a free floor plan design service to provide a bespoke design scheme that falls within your specific budget. Utilising your CAD drawings, our in-house Creative Design Team will provide a floor plan that shows a coordinated floor scheme using a combination of products from Gerflor & Gradus' portfolio such as Carpets, LVT, Resilient Flooring, Safety Flooring, Barrier Matting, Wall Protection, LED Lighting and Stair Edgings. The floor plan aims to offer solutions that are the most suitable product for the specific areas in terms of the latest guidance as well as aesthetics, performance, and durability.



Supply & Fit

Gradus' wall protection supply and fit service provides a comprehensive solution for safeguarding walls in the Life Science, ESD, High Technology, Clean Rooms & Manufacturing Sectors. The service includes the supply and installation of corner guards, crash rails, and wall cladding, designed to withstand impact and abrasion, reducing the need for repairs and maintenance. The products come in various materials, finishes, and colours, allowing for customisation to suit any interior design scheme. With a team of experienced installers, Gradus ensures products are fitted to the highest standards, providing maximum protection and a seamless finish. The expert advice and guidance supports customers to choose the right products for their specific needs, ensuring compliance with safety requirements and building regulations.





Gerflor teams have always considered customers and the environment as their absolute priorities. Our floor coverings, wall solutions and finishing components are user friendly, sustainable solutions. They are designed with respect for our planet to last as long as possible with proposed end-of-life options. From product design through to end-of-life, the circular economy is a core priority for the group. We have set out key commitments to guide our environmental management up to 2025.

GRADUS

At Gradus, we care deeply about our planet and our role in its future. We are committed to reducing our environmental footprint and enhancing our positive impact. By 2025, we aim to achieve ambitious targets which include reducing carbon emissions, wastage and usage. We are also committed to boosting recycling and moving into green energy. In addition we are working with local communities by giving back to society and local causes.





Head Office:
Park Green,
Macclesfield,
Cheshire, SK11 7LZ

Gerflor enquiries
Tel: 01625 428922
E-mail: contractuk@gerflor.com
Website: gerflor.co.uk

Gradus enquiries
Tel: 01625 428922
E-mail: imail@gradus.com
Website: gradus.com